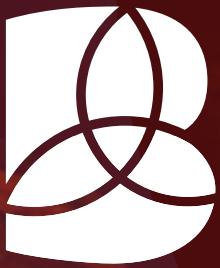


FREE HOLIDAY GUIDE & MAP



**BOYNE  
VALLEY**

Birthplace of Ireland's Ancient East

# Discover Boyerne Valley 2023-2024

Birthplace of Ireland's Ancient East



**IRELAND'S  
ANCIENT EAST®**  
*Wander Through Time*

[discoverboynevalley.ie](https://discoverboynevalley.ie)



Birthplace of Ireland's Ancient East



“The Boyne is not a showy river. It rises in County Kildare and flows gently and majestically through County Meath and joins the sea at Drogheda in County Louth some 112 kilometres later. It has none of the razzmatazz of its sister, the Shannon. It's neither the longest river in Ireland, nor does it have the greatest flow. What it does have, and by the gallon, is history.

In fact, the Boyne Valley is like a time capsule. Travel along it and you travel through millennia of Irish history, from passage tombs that pre-date the Pyramids, to the Hill of Tara, seat of the High Kings of Ireland, all the way to the home of the First World War poet Francis Ledwidge in Slane. It's the Irish equivalent of Egypt's Valley of the Kings. And you can choose to explore it by car, bicycle, kayak, or by strolling along its banks and the towpaths of the navigation canals that run alongside from Navan to Oldbridge.”

Frances Power - Editor, Cara, the Aer Lingus inflight magazine - Boyne Valley Feature, October/November 2014 Pg 68-78  
Cara magazine is available online at [issuu.com](http://issuu.com)

[discoverboynevalley.ie](http://discoverboynevalley.ie)

Angling 12

## Contents

The Boyne River	01	Angling	12	Festivals & Events	25	Towns & Villages	37
Ireland's Ancient East	03	Horse Racing	13	Halloween in the Boyne Valley	27	Itineraries	41
Outdoor Activities	05	Golf	15	Easy Access	28	Discover Boyne Valley Flavours	45
Royal Canal Greenway	06	Adventures & Activities	17	Where is the Boyne Valley	27	Eating Out	47
Walking, Cycling & Paddling	07	Organised and Guided Tours	19	Boyne Valley Drive	31	Gastro Pubs and Bars	50
Boyne Valley Gardens	09	Music, Arts & Culture	21	Boyne Valley Drive Sites	33	Craft Distilling & Brewing	52
The Coast	11	Retail & Crafts	24	Brú na Bóinne	35	Where to Stay	53

Photography courtesy of: Barry Cronin Photography; copterview.ie; Fáilte Ireland; jennymatthewsphotography.com; irelandscontentpool.com; Islander Visual; perfectstills.com; and Tourism Ireland





# The Birthplace of Ireland's Ancient East

Your journey of discovery starts here

To tell the story of Ireland's Ancient East we must start at the beginning... 5,000 years ago in the Boyne Valley.

We present to you 5,000 years of Europe's history in a lush green, compact and accessible landscape...

It's easy to take it all in,  
To go at your own pace,  
To dip in or delve in,  
To meet great people and listen to stories told by the greatest storytellers in the world,  
Take the time to experience the Boyne Valley, a unique and diverse place that has inspired for thousands of years and the birthplace of Ireland's Ancient East.

Discover tombs older than the pyramids at Brú na Bóinne and the birthplace of Samhain on the Hill of Tlachtga. Be moved at monasteries such as Mellifont Abbey, explore a medieval armoury at Trim Visitor Centre, brave a battleground at the famous Battle of Boyne or test your own courage on the legendary Cú Chulainn rollercoaster at Emerald Park. Discover the stories of a time of contrasts, the time of empire, rebellion, innovation and industry.

The spirit of the past is wonderfully alive in the Boyne Valley today. It is full of mystery and excitement, humour and adventure.

Your tour through Ireland's Ancient East will be an experience in living history in a special place where magical things happen.

Enjoy!



[discoverboynevalley.ie](http://discoverboynevalley.ie)

# Out and about in the Boyne Valley

Whether it is a gentle riverside walk or hiking up to dramatic ruins, the great outdoors is where the Boyne Valley can be best appreciated. Bike or stroll along the Royal Canal Greenway, a section of which passes through south Meath, or paddle along the Boyne Blueway from the medieval town of Trim to Bective Abbey, filming location for Ridley Scott's *The Last Duel*. There are many tracks and trails right across the Boyne Valley, from woodland walks to historic routes, as well as the Boyne Valley Camino that runs in a loop from Drogheda to Old Mellifont Abbey.

Wide open beaches north of the Boyne in Louth and south of the Boyne in Meath offer plenty of room to stretch the legs, whilst the thrill of the gallops and jumps may be witnessed at the many racecourses in the region. For a gentler pace, the Boyne Valley boasts numerous high-quality golf courses, designed by noted professionals, whilst the Boyne Valley Garden Trail allows visitors to savour the natural beauty and architectural gems of the area.



# The Royal Canal Greenway



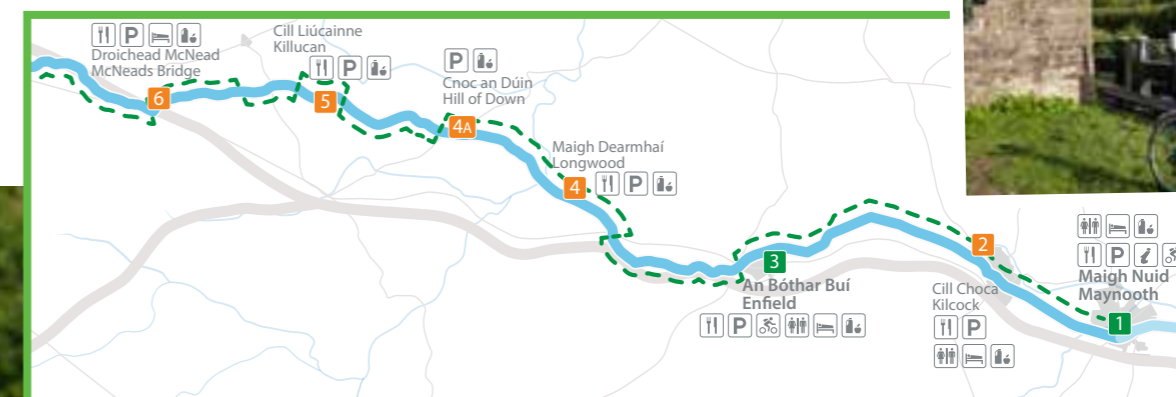
The enchanting Royal Canal Greenway is 130km of level towpath, ideal for walkers, runners and cyclists of all ages and stages. Starting in cosmopolitan Maynooth, it follows the 200 year old canal through friendly Enfield and lively Mullingar to charming Cloondara in Longford, with cafés, picnic spots and attractions along the way. Rustic and industrial landscapes combine, with rolling fields, pretty waterside villages, working locks and historic landmarks. Cycle between any of the main towns and return by train to where you started. Follow where once horse-drawn barges journeyed and keep an eye out for hidden wildlife wonders along the way.

## Rolling countryside of Meath

Approximately 22km of the Greenway is set in County Meath, with access points at Enfield, Longwood and Hill of Down. Storyboards and map-boards at the access points guide you along the way, with picnic areas and benches to pause and enjoy your surroundings.

In Enfield, industrial heritage is showcased in the fine old Midland Great Western Railway buildings - the stationmaster's house, warehouses, old railway signal boxes and towers, still in use today. A few kilometres further on the Blackwater Aqueduct carries the canal over the Blackwater River. At Longwood Harbour the Ribbontail Paddlers Club use a restored lock keeper's cottage as a clubhouse. The club is named after the historic Ribbontail Footbridge, built for mass-goers to cross the canal on their way to the church in Longwood. You may even spot a barge at the Hill of Down before you travel onwards to Killucan.

The Royal Canal Greenway - One Trail, Endless Discoveries.  
[royalcanalgreenway.org](http://royalcanalgreenway.org)



## National Famine Way

The Royal Canal Greenway also includes part of the National Famine Way, which follows the poignant journey from Roscommon to Dublin of 1,490 Great Famine emigrants. Monuments at the Hill of Down, Longwood and Enfield mark this sad yet important part of Irish history. See [nationalfamineway.ie](http://nationalfamineway.ie) for more details.



# Walking, cycling and paddling

Gentle pathways to explore at leisure



Boyne Ramparts Heritage Walk

## Heritage and Cultural Walking Routes

### Athboy Heritage Trail

Take the Athboy Heritage Trail around the town and learn about its medieval origins, its architecture and the many archaeological sites nearby.

### Boyne Ramparts Heritage Walk

This walk from Navan to Stackallen Bridge is 8km each way. Along this linear stretch there are interpretive panels providing interesting facts to help the walker enjoy the beauty of the Boyne Valley. Carpark located on the R153 in Navan.

### Boyne Valley Camino

The Boyne Valley Camino is a self-guided, 25km looped walk from Drogheda, part of the Celtic Camino series. The route takes in the beautiful Townley Hall woods, Belnumber Wood, Oldbridge House, Mellifont Abbey and the stunning Boyne Canal. Official Camino Passports can be used to collect beautiful stamps created by local artists en route. Download the guide at [drogheda.ie](http://drogheda.ie) or pick up a copy from the Drogheda Tourist Office.

### Battle of the Boyne - Oldbridge Estate Walks

Over 5 km of scenic walks on the historic battle site, linking with adjacent Boyne Greenway and Boyne Canal Walk. Free of charge. Dogs must be on leads at all times. No bikes permitted on walks.

### Blackwater Park Scéal Trail, Navan

A fun way to bring together the enjoyment of reading, a love of the outdoors and some physical activity. The story of 'Socks for Mr Wolf' starts at the playground and is told through story boards. Each one features questions about the story and movement tips to do on the way to the next page.

### Clonard Heritage Trail

Clonard is a peaceful village in south west Meath but during the medieval period it was one of the foremost centres of ecclesiastical learning in Ireland and even in Europe. Download the trail brochure to learn about its rich history, located close to the Royal Canal Greenway.

### DRAWDA Urban Art Trail

Six murals that focus on key figures and moments from mythology, with an Audio Trail! Pick up your printed map from Droichead Arts Centre, Love Drogheda BIDS or local business' or view it online. Take a stroll around Drogheda, use your smart device to scan the code at the mural and listen to the mythological stories behind them!

### Drogheda Historic Trail

Over 800 years, Drogheda has been the stage for many of the events that have shaped Ireland's destiny. Using the map and information panels, take an hour or so to explore it and be rewarded by stories that took centuries to write.

### Kells Historic Trail

In the ninth century, Kells was known as 'Áiníus Érenn' or 'The splendour of Ireland'. A series of information panels guide you around this historic town. Explore the medieval high crosses and monastic site where the Book of Kells was completed, one of Ireland's greatest cultural treasures. For guided tours see the Kells Walkabout Tours (p.20).

A path well worn...

Visitors should respect the facilities, the flora and fauna, keep dogs under strict control and co-operate in keeping the areas free from litter, or if walking in a wooded area, refrain from lighting fires. Wear walking boots, bring rain gear and fluids. Leave only footprints and take only memories...

For more details and downloadable maps see [discoverboynevalley.ie](http://discoverboynevalley.ie)

### Navan Points of Pride

Navan Points of Pride town walk starts at the Solstice Arts Centre and is 4km long. At a leisurely pace it can be completed in approximately 2 hours, taking in the history, architecture and culture of the town.

### Slane Castle Walking Trail

International rock legends have entertained millions of fans against the backdrop of Slane Castle since 1981. Follow in their footsteps on the Concert Field Walk which starts at the Castle courtyard, and wander through beautiful mature woodlands. Check [slanecastle.ie](http://slanecastle.ie) for opening times.

### Slane Historic Trail

Slane's long and fascinating history is brilliantly outlined on this trail. Its past is brought to life through a series of plaques and panels placed at points of interest along the route.

### Trim Historic Trail

This fantastic town trail breathes life into the historical significance of Trim. Start at the Visitor Centre and follow the historical signs to learn about Trim and its history.

## Nature and Forest Walks

### Balrath Wood

Balrath Wood, located just off the N2 on the R153 for Navan, was once part of the Somerville estate. A good time to visit Balrath is in late Summer/early Autumn when there are plenty of leaves and some fruits /nuts on the trees and some wildflowers still in bloom. Spring and Summer are also good times, especially to see woodland wildflowers in their natural habitat.

### Girley Bog Eco Walk

3.5 mile waymarked National Loop covering forest and bogland located on the N52 to Mullingar just 5 km from Kells on the left hand side. The loop takes approximately 1 hr 30 mins and requires walking boots.

### Littlewood Forest, Slane

Located on the N2 Collon Road, 1 mile from Slane, provides a fantastic amenity for walkers. The forest covers 28 hectares (70 acres). Today it comprises a varied mix of conifer and broadleaved tree species. A series of directional posts and information panels detail the flora, fauna and history along the walk.

### Loughcrew Estate Walk

Visit Loughcrew's historic gardens and spend a day rambling through a diverse, tranquil landscape, with plenty to entertain all ages. Children love the wonderful Fairy Trail, while gardeners can enjoy the beautiful array of trees and plants. There are a number of peaceful walks within the grounds and a 6km hike to Lough Creve, which can be taken at any pace.

### Mullaghmeen Forest

Situated 8 km from Oldcastle, Mullaghmeen has 1,000 acres of forest. Picnics can be enjoyed and there are long and short walks depending on level of fitness. Mullaghmeen Forest is a state forest and provides 14 miles of roadway for the walker. It leads to the highest point in County Westmeath (894ft.)

### Porchfield

Explore the wonders of Trim through the medieval open field system known locally as the Porchfield. The Trim River Walk commences at Trim Castle and new interpretive panels guide you along the journey to the wonderful ruins of Newtown Trim. Enjoy a quick workout at the new exercise area, try out the performance space and appreciate nature as you walk..

## Greenways and Blueways

### Boyne Greenway

Running 1.9km from Dominic's Park on the south bank of the River Boyne near the Bridge of Peace in Drogheda, the Boyne Greenway takes you along the river close to the Mary McAleese Cable Bridge and then along the Boyne Canal to the Battle of the Boyne Visitor Centre at Oldbridge.

### Boyne Valley to Lakelands Greenway

A 30km walkers' and cyclists' paradise along the route of the old railway line from Navan in Co. Meath to Kingscourt in Co. Cavan. The project is currently in development and includes recently-completed looped sections at Nobber and Castletown Kilpatrick and another section from Wilkinstown village to the Tailing Ponds near Navan. See [discoverboynevalley.ie](http://discoverboynevalley.ie) for up-to-date details.

### Royal Canal Greenway

Ireland's longest greenway. See pg. 6 for details.

### Boyne Blueway Trim

Centred around the picturesque heritage town of Trim, the Boyne Blueway is a beautiful stretch of River Boyne from Trim to Bective Mill. Paddle along the river and enjoy the scenery and heritage, on a trip that will take approximately 3 hours.



Drogheda Historic Trail



Boyne Valley to Lakelands Greenway



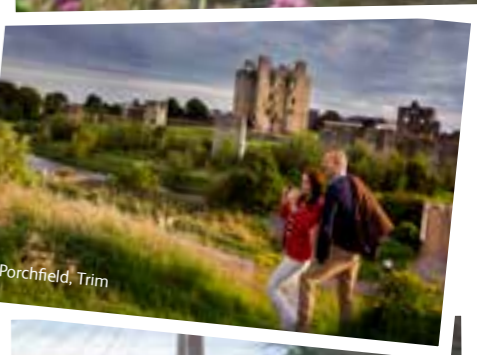
Kells Historic Trail



Girley Bog Eco Walk



Boyne Blueway Trim



Porchfield, Trim



Boyne Greenway



Collon House

# Blooming amazing



Beaulieu House & Garden



College Hill House

The rich heritage of the Boyne Valley is reflected in gardens that date back to the C17th. Each garden member is open either by appointment, or for a set number of days/year. Many gardens host events, including walks, charity fetes, plant sales, outdoor theatre, music and much more. Opening dates subject to revision, please see individual websites and social media for details.

boynevalleygardentrail.com  
Face Book: Boyne Valley Garden Trail



Battle of the Boyne, Oldbridge House and Gardens

## Historic Gardens

### Augustinian Garden of Remembrance, Shop Street, Drogheda, Co. Louth

Adjoining the Augustinian Church and drawing on its monastic heritage the garden holds the names of loved ones to be remembered in a peaceful setting formed by pleached lime trees and standing stones surrounding a water memorial. Holly, Juniper, soft fruit trees, flowering herbaceous varieties and aromatic herbs fill the garden. Groups by appointment.

Tel +353 (0) 41 983 8409  
E drogheda.augustinian@hotmail.com  
Open Apr-Oct 9am - 5pm, Nov-Mar 9am -3pm  
Fee Free

### Balrath House and Garden, Navan, Co. Meath

Superb Georgian House dating to 1750 surrounded by 1.5 acres of lovely landscaped gardens in the centre of the Boyne Valley. Contact Frances for appointments and groups. [balrathcourtyard.com](http://balrathcourtyard.com)

Tel +353 (0) 41 982 5749 / (0) 87 954 7883  
E frances.balrathhouse@gmail.com  
Open May 5-28, June 22-July 5 & Heritage Week 9am - 1pm.  
Fee €10 adults €8 seniors and students

### Barmeath Castle, Dunleer, Co. Louth

Unique, C18th landscape designed by Thomas Wright includes fine specimen azaleas and rhododendrons. A recently restored walled garden restoration project is a joy to visit with opulent herbaceous borders and kitchen garden plots. Groups by appointment. [boynevalleygardentrail.com](http://boynevalleygardentrail.com)

Tel +353 (0) 41 685 1205  
Open May 1-31, June 1-9, 9am-1pm. Heritage Week in August.  
Fee €5. Children free

### Battle of the Boyne, Oldbridge House and Gardens, Drogheda, Co. Meath

Restored Victorian Walled Garden with unique sunken Octagonal Garden, herbaceous borders, Peach House, Dog Kennels and Bothy with exhibition about Walled Gardens in the area. Admission to gardens is free of charge. Dogs and ball games are not permitted in the gardens. [battleoftheboyne.ie](http://battleoftheboyne.ie)

Tel +353 (0) 41 980 9950  
E battleoftheboyne@opw.ie  
Open All year  
Fee Free admission

### Francis Ledwidge Museum, Janeville, Slane, Co. Meath

World War I poet and soldier, Francis Ledwidge, was born and raised in this restored C19th labourers' cottage, containing memorabilia of the poet's life and work. The pretty cottage garden reminds us of the poet's love for nature deep in the countryside of Slane. [francisledwidge.com](http://francisledwidge.com)

Tel +353 (0) 41 982 4544  
E info@francisledwidge.com  
Open 7 days: Mar-Oct 10am -5pm, Oct-Mar 10am-3.30pm  
Fee €4 adults, €3 seniors and students, €8.50 family

### Kilgar House Gardens, Gallow, Kilcock, Co. Meath

Kilgar Gardens covers an area of 3 acres comprising of beautifully planted formal & informal garden rooms, graduating to a more naturalistic style of planting towards the outer reaches. Tearooms open serving sweet treats. Groups by appointment. Coach parking. [kilgargardens.com](http://kilgargardens.com)

Tel +353 (0) 87 134 4950  
E kilgargardens@gmail.com  
Open May - Sep, Sat & Sun, 11-5 pm. Groups 7 days  
Fee Garden €6pp

### Killineer House and Gardens, Drogheda, Co. Louth

Early C19th spectacular woodland garden with beautiful spring flowering shrubs and trees. Formal paths and terraces lead to a picturesque lake and summerhouse. A visit to the 1.5 acre walled garden with fruit trees, herbaceous borders and vegetables is heavenly. Groups by appointment. No dogs. [killineerhouse.ie](http://killineerhouse.ie)

Tel +353 (0) 86 232 3783  
E charles.p.carroll@gmail.com  
Open Feb 1-20, May 1-15, June 1-10, Aug 10-24  
Fee Garden €10pp

### Loughcrew Estate and Gardens, Co. Meath

Visit Loughcrew's historic gardens and spend a day rambling through a tranquil landscape. Children love our wonderful Fairy Trail, while gardeners enjoy investigating the beautiful array of trees and plants. The remains of a medieval motte as well as St Oliver Plunkett's family church can all be explored here. [loughcrew.com](http://loughcrew.com)

Tel +353 (0) 49 854 1356  
E admin@loughcrew.com  
Open January - December, Monday to Sunday 10am - 5pm.  
Fee Daily: Adult €8, Senior/Student €6, Children €4. Annual family pass: 2 adults & 3 children €95 or €40 for single tickets.

### Rokeyby Hall, Grangebellew, Dunleer, Co. Louth

Built by architect Francis Johnston in the C18th, Rokeyby won the An Taisce Ellison Award, 2014, for the restoration of its Turner designed conservatory. House and garden can be visited at times listed. Groups of 8 by appointment. [rokeyby.ie](http://rokeyby.ie)

Tel +353 (0) 86 864 4228  
E info@rokeyby.ie  
Open May & Sep Mon-Sat 10am-2pm. Heritage Week 10am-2pm  
Fee €7 adults, €5 students/children

### Sonairte Visitor Eco Centre and Gardens, The Ninch, Laytown, Co. Meath

Sonairte, within an historic Georgian farmstead, features a walled organic garden, nature trail and ancient Rath with views of Ballygarth Castle, the river Nanny estuary and Irish sea. Visit the Bee Museum and the Energy Education suite. Vegetarian / Vegan Café and Eco Shop with organic, zero waste, fair trade & low carbon footprint products is on site. [sonairte.ie](http://sonairte.ie)

Tel +353 (0) 41 982 7572  
E hello@sonairte.ie  
Open see website

## By Appointment Gardens

### Beaulieu House and Garden, Drogheda, Co. Louth

C18th walled garden overlooking the river Boyne, planted with a vibrant double herbaceous border, fruit trees, knot garden, lawns and restored C18th pavilion. See website for events. [beaulieuhouse.ie](http://beaulieuhouse.ie)

Tel +353 (0) 41 983 8557  
E beaulieu.house.garden@gmail.com  
Open By appointment only & Heritage Week. Min group of 10

### Bee Wise Nature Trail, Creroque, Kilmessan, Co Meath

This biodiversity nature trail comprises young woodland, flowering/fruited hedgerows and wildflowers. The 1.5km woodland path has information points and benches to sit and enjoy the wildlife around you, and a large, working Observation Hive to view the fascinating life of the Honey Bee. A sensory area, maze and play area can be enjoyed by all. [beewise.ie](http://beewise.ie)

Tel +353 (0) 86 344 6791  
E paddy@beewise.ie  
Open See website. Groups by appointment. Open days throughout the year

### College Hill House, Braystown, Slane, Co. Meath

College Hill House is set in 4 acres of superb, landscaped gardens. Eileen offers garden design services and gardening skills classes. There are amazing mature trees, an extensive organic vegetable garden, a crocus lawn, a walled garden and a wonderful, feature Georgian stone parterre. Open all year round. [collegehillhouse.ie](http://collegehillhouse.ie)

Tel +353 (0) 87 140 0220  
E info@collegehillhouse.ie  
Open year round by appointment only

### Collon House, Collon, Co. Louth

Historic home built in 1740, with fine, Georgian interiors and an enclosed, ornamental garden with period planting. Award winning period accommodation is offered. Tea/Coffee by arrangement. Please see website for more details. [collonhouse.com](http://collonhouse.com)

Tel +353 (0) 87 235 5645  
E collonhoureception@gmail.com  
Open By appointment only

### The Cottages Ireland, Seabank, Coast Road, Bettystown, Co. Meath

The Cottages are a dreamy hamlet of 300-year-old thatched cottages, set in large organic flower gardens, by the seaside. [cottages-ireland.com](http://cottages-ireland.com)

Tel +353 (0) 41 982 8104  
E info@cottages-ireland.com  
Open By appointment Spring & Autumn only. Min group of 10

### Julianstown Village Garden, Co. Meath

Transformed from a derelict 3 acre site by volunteer residents, the garden has an orchard, woodland, pollinating flower beds, soft fruit bushes, herbs and pond with seating scattered throughout. With An Taisce green flag & Biodiversity Ireland Pollinator awards, regular family events are held in this wonderful garden. Check website for details. [julianstowncommunity.com](http://julianstowncommunity.com)

Tel +353 (0) 86 347 7283  
E julianstowndca@gmail.com  
Open All year

### Rosemount, Julianstown, Co. Meath

Rosemount is a ten-acre-parkland sloping down to the banks of the temperamental River Nanny. It is planted with a mixture of native trees and shrubs, interspersed with parkland specimen trees. A separate guest house can be used for refreshments and lectures. Snacks and drinks by arrangement. [kendumusic.com](http://kendumusic.com)

Tel +353 (0) 87 612 5291  
E dorothy@alioth.eu  
Open by appointment only  
Fee Group tour €15 pp incl refreshments. Min 6 per group

### The Station House Hotel, Kilmessan, Co. Meath

The Station House is the Boyne Valley's top country house hotel with exquisitely tended gardens creating an oasis of relaxation. Country-style afternoon teas can be booked year round. [stationhousehotel.ie](http://stationhousehotel.ie)

Tel +353 (0) 46 902 5239  
E info@stationhousehotel.ie  
Open All year : contact hotel

### Tankardstown House, Rathkenny, Slane, Co. Meath

Tankardstown comprises 80 acres of woodland, parkland, courtyards and walled gardens. A 500m lime tree avenue leads up to the late C18th Manor House with wonderfully tended gardens and surrounds. The walled kitchen garden supplies the award winning Brabazon Restaurant. [tankardstown.ie](http://tankardstown.ie)

Tel +353 (0) 41 982 4621  
E info@tankardstown.ie  
Open Garden by appointment

## Garden Centres

### Boyne Garden Centre & Nursery, Ardcaif, Slane, Co. Meath, C15P92W

Multi-Award-Winning Nursery, winning several 'Best in Show' & ten successive Gold Medals at Bloom. Renowned for their unique selection of top-quality plants, grown in their own nursery, with special emphasis on plants that encourage pollinators and biodiversity. See website for catalogue. Members of ISNA [Irish Specialist Nursery Association]. [boynegardencentre.ie](http://boynegardencentre.ie)

Tel +353 (0) 41 982 4350  
E aileen@boynegardencentre.ie  
Open Please see website for opening times

### Elmgrove Farm, Drogheda Road, Gormanston, Co. Meath, K32 C925

Owned by the McCullough family, Ireland's largest flower farm grows 20 varieties of daffodils, peony roses, sunflowers, lilies, gladioli & others throughout the seasons. Flowers sold through farm shop, farmers markets & online. [elmgrovefarm.ie](http://elmgrovefarm.ie)

Tel +353 (0) 41 988 4389  
E info@elmgrovefarm.ie  
Open Please see website and Facebook/Instagram. No Dogs. Min 4, Max 30 per Group. By appointment only.

### Ratoath Garden Centre, Raystown, Ashbourne, Co. Meath, A84 C938

Owned by John and Bernie Lord who have created one of the largest show gardens in Ireland. Garden walks and talks on request. Visit the Wildflower Café for tasty treats and enjoy the eclectic gift shop. [ratoathgardencentre.ie](http://ratoathgardencentre.ie)

Tel +353 (0) 1 825 6678  
E ratoathgardencentre@hotmail.com  
Open Summer, Mon-Sun 10am-6pm.  
Winter, Mon-Sun 10am-5pm.

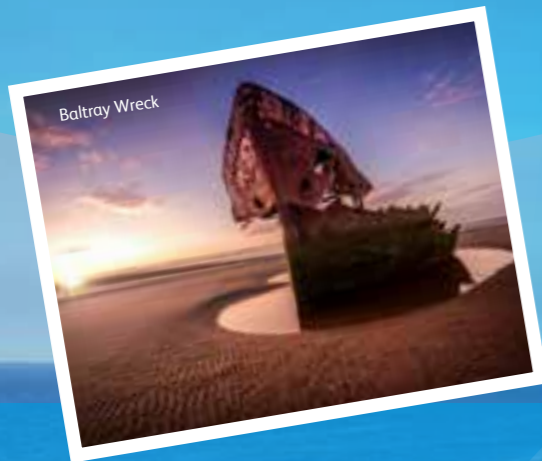
### Riverlane Nurseries, Roristown Lodge, Trim, Co. Meath, C15 E02X

Owned by John and Eileen Eivers - winners of Gold, Gilt and Silver medals at Bloom, the nursery specializes in herbaceous perennials and cottage garden plants. [riverlane.ie](http://riverlane.ie)

Tel +353 (0) 87 636 3506  
E info@riverlane.ie  
Open Please check website for opening times.

# Feel the sand in your toes

Discover our coastal wonderland



County Louth and County Meath have some stunning beaches that stretch for miles along the coast. They can be enjoyed by families (don't forget the bucket and spade!), walkers, runners and those who want to go sea-swimming! Join us on a journey from north to south, to see what's on offer!

The beach at Seapoint/Baltray in County Louth is a stunning place to take a walk. You might even see the rusting shipwreck of the MV Irish Trader at low tide....

Nearby is County Louth Golf Club, also affectionately known as 'Baltray', it is situated 7km from Drogheda at the mouth of the River Boyne. The course is laid out in two nine-hole loops covering 190 acres and consistently ranks among the top 10 courses in Ireland. County Louth Golf Club assures a warm and friendly welcome.

The Boyne flows into the Irish Sea at Drogheda Co. Louth. Drogheda is a bustling heritage town, easily accessible by road and rail. It offers historic attractions, great restaurants and cafes and luxury accommodation.

On the south side of the mouth of the Boyne we cross into County Meath at Mornington, where we can see the iconic Maiden's Tower and the Lady's Finger monument.

From Mornington we continue strolling along the beautiful beaches of Laytown and Bettystown, perfect for long walks to complete your Boyne Valley beach adventure.



Mornington Beach

# Angling for a catch

The Boyne Valley is a great destination for the visiting angler. The river and its many smaller tributaries offer superb sport for the fly fishing enthusiast and the chance to catch wild brown trout and salmon. The region also has many beautiful lakes and canal stretches offering a fantastic variety of game, pike and coarse fishing.

## Angling Associations

The majority of trout and salmon angling on the Boyne River is controlled by angling associations and some by private fishery owners. Anglers wishing to fish for wild brown trout on angling association water must obtain a permit from that association and fishing methods must be in accordance with the current rules and regulations of the association. Most associations support a policy of catch and release. When salmon fishing, both a permit and a state licence are required. Salmon fishing is subject to the salmon and sea trout regulations which are updated annually.



## in the magical waters of the Boyne Valley

### Trout and Salmon Fishing

The river Boyne and its tributaries are recognised as being among Ireland's best wild brown trout fisheries. Some of the best fishing in the Boyne Valley can be found on the River Boyne at Slane, Navan, Trim and Longwood. There is also excellent wild brown trout fishing on the Kells Blackwater, Stoneyford, Athboy, Enfield Blackwater and Deel rivers. Top quality "Lough Style" fishing for brown trout is accessible on the legendary Lough Sheelin (a Midland Fisheries permit is required). Beautiful Lough Lene near Collinstown offers excellent fly fishing for stocked rainbow and brown trout.

Competitively priced day permits can be purchased for most waters and the best way to ensure you make the most of your fishing trip is to book an experienced angling guide. The fishing season on the Boyne River and tributaries runs from March to September. Salmon fishing is easily accessed on the River Boyne between Navan and Drogheda and the best period is generally from the end of July to the end of September. Additional trout fishing in Co. Meath is available on the River Nanny around Duleek.

### Pike and Coarse Angling

With dozens of lakes and miles of canal to choose from, the Boyne Valley offers excellent opportunities for the coarse and pike angler. This type of fishing is available twelve months of the year. A licence is not generally required, but check locally if fishing a club-controlled water.

Drumconrath village in County Meath is surrounded by a number of small to medium sized lakes with parking and fishing platforms. These include Corstown Lake, Ballyhoe Lakes, Mentrím Lakes, Lough Bracken and Balrath Lake. Whitewood Lake near Kilmainhamwood is another good fishery. All these lakes contain good stocks of roach, bream, tench and hybrids.

The Royal Canal also provides great coarse fishing and big catches. A number of competitions are held here each year. Access points to this wild, rural coarse fishery may be found at Ferns Lock, Enfield, Longwood and Hill of Down.

### Sea Angling

From Clogherhead down to the mouth of the river Boyne and further south, there are extensive beaches offering good shore angling opportunities to fish for bass, flatfish, dogfish and mullet. The south beach at Laytown and the Boyne estuary are popular angling venues where bass, mullet, flounder, turbot, mackerel and sea trout can be caught. Evening and early morning tides can provide the best fishing opportunities.

### More Information

Information courtesy of Inland Fisheries Ireland. For more information about angling the region, fishing reports, publications, contact details and regulations contact Inland Fisheries Ireland. [fishinginireland.info](http://fishinginireland.info)

### Go Fishing Ireland

Guided boat fishing trips on the lakes and rivers of the Boyne Valley and Ireland's East. Go fishing and explore our beautiful waterways in the company of a professional, qualified fishing guide/instructor. All fishing equipment provided. All levels of experience catered for. Macetown, Navan, Co. Meath, T +353 (0) 86 805 5337  
E [chris@gofishingireland.ie](mailto:chris@gofishingireland.ie) [gofishingireland.ie](http://gofishingireland.ie)

# Chasing the wind

## Horse racing excitement in the Boyne Valley

The Boyne Valley is famous for the wonderful horses it produces. The reason being, experience in horsemanship from breeding, breaking, livery and training. Lessons and trekking for all ages and standards are available in the centres here.

Where better to go racing than in the Boyne Valley. There is plenty of choice. National Hunt and Flat racing are regularly held at Fairyhouse (home of the Irish Grand National) and Bellewstown (for over 300yrs). Navan Racecourse is one of the finest possible tests for National Hunt horses, whilst Laytown Races is a unique event where the horses race on the beach.



### Fairyhouse Racecourse

Fairyhouse Racecourse, home of the BoyleSports Irish Grand National, is Ireland's most valuable handicap steeple-chase with a prize fund of €500,000. First run in 1870, it has become a key date in the Irish sporting calendar. Public bar/ restaurant and suites available for meetings and functions. 2022 sees the 150th running of the BoyleSports Irish Grand National. [fairyhouse.ie](http://fairyhouse.ie)

Ratoath, Co. Meath  
Tel +353 (0) 1 825 6167  
E [info@fairyhouse.ie](mailto:info@fairyhouse.ie)

### Navan Racecourse

Home to 18 race meetings including the Fortria and Troytown on a superb National Hunt track. Enjoy fine dining and entertainment after racing. Tailored packages for birthdays, stag hen parties, afternoon tea and fundraisers of all group sizes available. [navanracecourse.ie](http://navanracecourse.ie)

Proudstown Road, Navan, Co. Meath  
Tel +353 (0) 46 902 1350  
E [info@navanracecourse.ie](mailto:info@navanracecourse.ie)

### Laytown Races

Laytown is famous for its annual strand races, and is a wonderful day out. Laytown Races occupies a unique position in the Irish and British racing calendar as it is the only race event run on a beach under the rules of the Turf Club. [laytownstrandraces.ie](http://laytownstrandraces.ie)

Laytown, Co. Meath  
Tel +353 (0) 41 984 2111 / (0) 86 374 8985  
E [laytownraces@gmail.com](mailto:laytownraces@gmail.com)

### Bellewstown Racecourse

Bellewstown has two festivals. The first recorded dates of the Bellewstown Races were in 1726. The racecourse is beautifully situated in a rural setting with magnificent views of the Mountains of Mourne to the north and the Irish sea to the east. [www.bellewstownraces.ie](http://www.bellewstownraces.ie)

Bellewstown, Co. Meath  
Tel +353 (0) 41 982 3614  
E [info@bellewstownraces.ie](mailto:info@bellewstownraces.ie)

Laytown Strand Races

Navan Racecourse

Bellewstown Racecourse



## 2023 race fixtures

Please check websites for up-to-date race fixtures.

### Fairyhouse Racecourse

January	01	Sun
	14	Sat
	19	Thur
	28	Sat
February	08	Wed
	25	Sat
April	08	Sat
	09	Sun
	10	Mon
June	01	Thur
	09	Fri
	16	Fri
July	12	Wed
September	18	Mon
October	02	Mon
	07	Sat
November	07	Tue
	14	Tue
December	02	Sat
	03	Sun
	16	Sat

### Navan Racecourse

January	21	Sat
February	12	Sun
March	04	Sat
	11	Sat
	29	Wed
April	22	Sat
May	13	Sat
June	11	Sun
July	15	Sat
August	31	Thur
September	02	Sat
	16	Sat
October	04	Wed
	18	Wed
November	18	Sat Navan Racing Festival
	19	Sun Navan Racing Festival
December	09	Sat
	17	Sun

### Laytown Races

September 12 Tue  
A special event where the horses race on the beach.

### Bellewstown Races

April	06	Thur
July	06	Thur
	07	Fri
	08	Sat
August	29	Tue
	30	Wed
September	27	Wed
	28	Thur



# Time for tee

On some of the finest courses in Ireland

From the challenging parklands at Headfort, Royal Tara and Co. Meath Golf Club, to the historic links at Laytown & Bettystown, golfers of all ages and standards will find a course to suit their game. Add in the world famous links course at Baltray together with more recent gems such as Killeen Castle, Knightsbrook, Julianstown and Bellewstown - and there is enough variety to whet any golfer's appetite to stay and play in the Boyne Valley.

Boyne Valley offers quality and value to visiting golfers and you will be assured of a warm Irish welcome wherever you go. You will find accommodation to match the great golf courses with a selection of fine hotels, guest houses and self catering, all within easy reach of every course.

Visit [discoverboynevalley.ie](http://discoverboynevalley.ie) for further details on accommodation, golf and things to do while in the Boyne Valley.



## Bellewstown Golf Course

A challenging, but fair golf course suitable for all levels of golfing ability. The course boasts USGA greens, mature trees and many exciting water features and breathtaking views up to the Mourne mountains and over the Boyne Valley. Relax in the warm and friendly clubhouse for light refreshments. [bellewstowngolfclub.ie](http://bellewstowngolfclub.ie)

Bellewstown, Co. Meath  
Tel +353 (0) 41 988 2757  
E [info@bellewstowngolfclub.ie](mailto:info@bellewstowngolfclub.ie)

## Black Bush Golf Club

Located in Dunshaughlin in the heart of County Meath, Black Bush Golf Club has matured into a fantastic test of golf. Tree-lined fairways, strategically positioned hazards and immaculate greens provide an enjoyable challenge for golfers. Excellent bar and restaurant open to non-members. [blackbushgolfclub.ie](http://blackbushgolfclub.ie)

Dunshaughlin, Co. Meath  
Tel +353 (0) 1 825 0021  
E [clubadmin@blackbushgolfclub.ie](mailto:clubadmin@blackbushgolfclub.ie)

## County Louth Golf Club

Also affectionately known as 'Baltray', it is situated 7km from Drogheda at the mouth of the River Boyne. The course is laid out in two nine-hole loops covering 190 acres and consistently ranks among the top 10 courses in Ireland. County Louth Golf Club assures a warm and friendly welcome. [countylouthgolfclub.com](http://countylouthgolfclub.com)

Baltray, Drogheda, Co. Louth  
Tel +353 (0) 41 988 1530  
E [reservations@countylouthgolfclub.com](mailto:reservations@countylouthgolfclub.com)

## County Meath Golf Club

Established in 1898, this parkland course is 3km from Trim. Tree lined undulating fairways, strategic bunkering and subtle, well maintained greens ensure an interesting test of golf for the discerning golfer. Modern clubhouse with full bar and catering facilities. Floodlit driving range open until 10.00pm. [countymeathgolfclubtrim.ie](http://countymeathgolfclubtrim.ie)

Newtownmoyknagh, Trim, Co. Meath  
Tel +353 (0) 46 943 1463  
E [info@countymeathgolfclubtrim.ie](mailto:info@countymeathgolfclubtrim.ie)

## Headfort Golf Club

36-hole parkland facility. Headfort Old, opened in 1928, is one of the best examples of a traditional parkland course with superb trees gracing its fairways and greens. Headfort Championship Course is a splendid course set among ancient woodland with native and Asiatic specimens, it was designed by Ryder Cup hero, the late Christy O'Connor Jnr. [headfortgolfclub.ie](http://headfortgolfclub.ie)

Navan Road, Kells, Co. Meath  
Tel +353 (0) 46 924 0146  
E [info@headfortgolfclub.ie](mailto:info@headfortgolfclub.ie)

## Julianstown Golf Club

A 9 hole parkland course located along the R132. It is excellently maintained and offers a real challenge to the most experienced golfers, boasting five par 4's and four par 3's with a lake and many difficult bunkers. There is also an 18 hole pitch and putt course. Club hire, teas and coffees available. [julianstowngolf.com](http://julianstowngolf.com)

Julianstown, Co. Meath  
Tel +353 (0) 41 981 1953 / (0) 87 464 7916  
E [julianstowngolf@gmail.com](mailto:julianstowngolf@gmail.com)

## Killeen Castle Golf Club

Host of the Ladies Irish Open 2011-2013 and the 2011 Solheim Cup. One of only two Jack Nicklaus Signature Golf Courses in Ireland, offering a championship golf experience, but suitable to golfers of all abilities. It is a magnificent test of golf, showcasing modern golfing excellence in terms of design and presentation. Voted the Best Parkland Course in the greater Dublin area. [killeencastle.com](http://killeencastle.com)

Dunsany, Co. Meath  
Tel +353 (0) 1 689 3000  
E [info@killeencastle.com](mailto:info@killeencastle.com)

## Knightsbrook Golf Resort

Situated in the heritage town of Trim, offers superb accommodation and an 18-hole championship golf course designed by former Ryder Cup Legend, the late Christy O'Connor Jnr. Challenging and creative, the course enjoys a stunning location with views over undulating fairways, testing greens and demanding water features. Enjoy the clubhouse with Gulliver's lounge and restaurant. [knightsbrook.com](http://knightsbrook.com)

Dublin Road, Trim, Co. Meath  
Tel +353 (0) 46 948 2100 / 46 948 2102  
E [golf@knightsbrook.com](mailto:golf@knightsbrook.com)

## Laytown & Bettystown Golf Club

A traditional links with undulating fairways, riveted bunkers and fast greens, situated on the banks of the River Boyne with views of the Cooley and Mourne mountains. First played in the 1880s, the club was formed in 1909 and has produced some of Ireland's best golfers, notably Ryder Cup participants - Des Smyth and Philip Walton. [landbgolfclub.ie](http://landbgolfclub.ie)

Bettystown, Co. Meath  
Tel +353 (0) 41 982 7170  
E [links@landb.ie](mailto:links@landb.ie)

## Royal Tara Golf Club

Nestling at the base of the Hill of Tara, the club is an enjoyable and conveniently located (just off M3 Motorway) golf retreat. One of the finest inland complexes with 27 championship holes set in mature parkland complete with new practice and driving range facilities. Proud recipients of the Best Hidden Gem Award by the Golfers Guide to Ireland December 2015. [royaltargolfclub.com](http://royaltargolfclub.com)

Bellinter, Navan, Co. Meath  
Tel +353 (0) 46 902 5508  
E [info@royaltargolfclub.com](mailto:info@royaltargolfclub.com)



County Louth Golf Club

Headfort Golf Club



Knightsbrook Golf Club

# Ready, steady, go!

## Adventure time in the Boyne Valley

The Boyne Valley, the birthplace of Ireland's Ancient East, is world renowned for its rich heritage.

What's more, with its wonderful living heritage and wealth of invigorating leisure activities sitting effortlessly side by side, it's the perfect place for your family adventure!

Fancy kayaking down the River Boyne or experiencing the thrills of karting? Why not make a splash down a thrilling water slide flume or test your nerve on a white-knuckle rollercoaster ride?

For those who like more leisurely pastimes, there are plenty of gentle activities tailor-made for you - from pet farms to explore, to fishing and swimming. Why not learn to paint or céille dance or see what it's like to be a medieval knight?

Emerald Park

## Adventure Activities & Family Fun

### An Gobha, Blacksmith of the Boyne Valley

An Gobha offers immersive and interactive experiences of traditional iron age metal forging, as demonstrated by the character An Gobha, the blacksmith, delivered with theatre, stories, myths, history and fun. An Gobha also manufactures and sells hand-crafted metal decorative objects and blade works based on ancient Celtic symbols and artefacts. Social Media: Tom King

Durhamstown, Bohermeen, Navan, Co. Meath, C15 D7W2  
Tel +353 (0) 86 865 2679  
E angobha@gmail.com

### Ashbourne Baseball Club

An amateur baseball and softball club drawing players from Dublin, Ashbourne and surrounding areas, Ashbourne Baseball Club has teams at all levels in the Irish Baseball League. New players are always welcome and the club is delighted to host visitors to its home games at the International Baseball Centre. [ashbournebaseball.com](http://ashbournebaseball.com)

International Baseball Centre  
Archerstown, Ashbourne, Co Meath  
E ashbournebaseballclub@gmail.com

### Bee Wise Nature Trail

Where Education, Nature and Fun meet! Explore the nature trail and discover some hidden gems for all ages to enjoy- sensory area, pond, observation hive, maze and outdoor play area. We have picnic areas throughout the trail to refuel. For further information on our Open Days and group tour options see [beewise.ie](http://beewise.ie)

Crerogue, Kilmessan, Co. Meath, C15 X62D  
Tel +353 (0) 86 344 6791  
E paddy@beewise.ie

### Boyne Boats

Take to the Boyne river and canal for a paddling tour in handcrafted traditional Kerry Naomhóg currachs that have starred in the hit TV show – Game of Thrones. You'll be guided through 5,000 years of the Boyne Valley where you will connect with, learn and treasure stories in the birthplace of Ireland's Ancient East. [boyneboats.ie](http://boyneboats.ie)

Near Lock House, Oldbridge, Drogheda, Co. Meath  
Tel +353 (0) 86 361 6420  
E info@boyneboats.ie

### Causey Farm

Activity programmes for children and adults, plus seasonal events. Team-building, Hen Party Packages, Causey Summer Camp, Causey Christmas Experience, Primary School Tours, Ecology and programmes for Junior Cert. Overseas visitors welcome to visit Causey Farm and 'Be Irish For A Day' – learning about Irish culture the fun way! Pre booking essential. [causey.ie](http://causey.ie)

Girley, Fordstown, Co. Meath  
Tel +353 (0) 46 9434 135  
E info@causey.ie

### Emerald Park

As Ireland's only Theme Park and Zoo, with unlimited fun-filled attractions, there is something for the whole family to enjoy at Emerald Park. Conquer the epic Cú Chulainn coaster, get close to dinosaurs on Dino Dash, enjoy the award-winning World of Raptors display, check out amazing Amur tigers and more! [emeraldpark.ie](http://emeraldpark.ie)

Kilbrev, Ashbourne, Co. Meath  
Tel +353 (0) 1 835 1999  
E info@emeraldpark.ie

### Funtasia ThemePark

Pirates Cove waterpark features over 200 water gushing activities including the adrenaline pumping Super Bowl speed slide and the gravity defying Boomerang slide. Other attractions include Atlantis Cove play area, bowling alley, disco roller skating, crazy golf, rock climbing, ultimate sky climb, indoor twin zipline, restaurant, simulators and more! [funtasia.ie](http://funtasia.ie)

Unit 1, Donore Road Industrial Estate, Drogheda, Co. Louth  
Tel +353 (0) 41 989 8000  
E partyoffice@funtasia.ie

### Irish Military War Museum

Ireland's only 'hands on' military museum, family park, playground and conference facilities. Also housing US convoy military vehicles. Extensive displays on WW1 and WW2, Irish War of Independence, Vietnam War and First Gulf War. Audio and guided tours daily. Tank rides, picnic area, maze, inflatable obstacle course and camping facilities. [irishmilitarywarmuseum.com](http://irishmilitarywarmuseum.com)

Starinagh, Collon, Co. Meath  
Tel +353 (0) 41 981 9501  
E irishmilitarywarmuseum@gmail.com

### Lismullin School of Culinary & Home Arts

Our School provides high quality classes and courses for all ages groups in Cooking, Baking and Home Arts, Demonstrations and Cook Camps. State of the art facilities, with ease of access, fun and professional tuition. We also run outreach programmes to help those in need in our community. [meathcookerschool.com](http://meathcookerschool.com)

Lismullin Hospitality Services Centre, Navan, Co. Meath  
Tel +353 (0) 46 902 5099 / (0) 86 894 4491  
E info@lismullinculinary.com

### Loughcrew Estate and Gardens

Visit Loughcrew's historic gardens and spend a day rambling through a tranquil landscape. Children love our wonderful Fairy Trail, while gardeners enjoy investigating the beautiful array of trees and plants. The remains of a medieval motte as well as St Oliver Plunkett's family church can all be explored here. [loughcrew.com](http://loughcrew.com)

Loughcrew, Oldcastle, Co. Meath  
Tel +353 (0) 49 854 1356  
E info@loughcrew.com

### Moynalty Steam Threshing Museum and Parklands

Officially opened in 2004, the Museum houses an extensive, varied and valuable collection of vintage agricultural machinery and household items. Many of these items were in everyday use and are truly a link to the past and an education in the lifestyle of our fore fathers. Open by appointment only. [moynaltysteamthreshing.ie](http://moynaltysteamthreshing.ie)

Donore, Moynalty Kells, Co. Meath, A82 C6K7  
Tel +353 (0) 87 239 3342  
E office@moynaltysteamthreshing.ie

### Navan Adventure Centre

Navan Adventure Centre is the perfect choice for fun family days out, play dates, birthday parties, hen parties and more! We offer a huge range of activities including laser tag, bouncy castles, obstacle courses, archery, football golf, mini golf, pedal go-karting and kids pedalo boats. We also have family fun festivals throughout Easter, Halloween & Christmas. [navanadventurecentre.ie](http://navanadventurecentre.ie)

Navan Racecourse, Navan, Co. Meath, C15 X8HP  
Tel +353 (0) 85 236 6322  
E info@navanadventurecentre.ie



### Newgrange Farm

Newgrange Open Farm and Coffee Shop offers a truly marvellous insight into farming life, allowing children a fun, up-close and hands-on experience with our animals. We also have indoor and outdoor play facilities and picnic areas. Meet the animals: puppies, kittens, rabbits, chicks, pet lambs, pet calves, pigs and more. [newgrangefarm.com](http://newgrangefarm.com)

Newgrange, Slane, Co. Meath  
Tel +353 (0) 41 982 4119  
E [info@newgrangefarm.com](mailto:info@newgrangefarm.com)

### Red Mountain Open Farm

Located just five minutes from the Newgrange monument, the open farm boasts the most extensive indoor facilities of all open farms in Ireland. It runs events for Easter and Halloween and is open six days a week during the summer. During the months of May and June the farm runs school tours which offer a fun learning experience. [redmountainopenfarm.ie](http://redmountainopenfarm.ie)

Corballis, Donore, Drogheda, Co Meath, A92 TN59  
Tel +353 (0) 41 982 3221  
E [info@redmountainopenfarm.ie](mailto:info@redmountainopenfarm.ie)

### Rockfield House

Take a step back in time, to experience below-stairs industriousness and upstairs luxury. On arrival, everyone dresses as servants to do household chores, under the watchful eye of the butler! Then rise through society and enjoy some fine dining and parlour games! An ideal venue for friends and family get-togethers/birthdays, hen parties, and team-building fun. [rockfieldhouse.com](http://rockfieldhouse.com)

Rockfield House, Athboy Road, Kells, Co. Meath A82 V9D5  
Tel +353 (0) 46 943 4135 / 086 129 6425  
E [info@rockfieldhouse.com](mailto:info@rockfieldhouse.com)

### Sonairte – the National Ecology Centre Visitor Eco Centre and Gardens

Sonairte is an interactive visitor centre promoting ecological awareness and sustainable living. Visitors can enjoy a walk in the walled Organic Garden and adjacent Nature Trail with spectacular views of the River Nanny, a browse in our Eco Shop, visit our Bee Museum, and try a delicious meal in the Sonairte Cafe. [sonairte.ie](http://sonairte.ie)

The Ninch, Laytown, Co. Meath, A92 D9XH  
Tel +353 (0) 41 982 7572  
E [hello@sonairte.ie](mailto:hello@sonairte.ie)

### Trim Medieval Armoury

Step back in time to Medieval Trim; hold a real sword, try on a Norman helmet and handle chainmail. Self-guided tours in the Trim Visitor Centre, or guided tours available on request (please contact Trim Visitor Centre for details). [discoverboynevalley.ie](http://discoverboynevalley.ie)

Trim Visitor Centre, Castle Street, Trim, Co. Meath, C15 TXA5  
Tel +353 (0) 46 943 7227  
E [trimvisitorcentre@discoverboynevalley.ie](mailto:trimvisitorcentre@discoverboynevalley.ie)

### White River Karting

Thrill seekers and petrol-heads will love a trip to White River Karting. Suitable for all ages - all equipment provided. Stylish Birel Art karts designed to give a very realistic race kart feel and the circuit is super smooth with lots of demanding corners and gradient changes. Individual, groups, party booking online. [whiteriver.ie](http://whiteriver.ie)

R169, Exit 12, M1 Motorway, Collon, Co. Louth  
Tel +353 (0) 41 981 9100  
E [info@whiteriver.ie](mailto:info@whiteriver.ie)

### The Zone

The Zone Activity centre Navan is an award-winning activity centre whose activities include indoor karting, bowling, virtual reality and soft play! We also have outdoor laser tag and other activities plus we have coffees and teas, hot lunch options and refreshments in the cafe. Perfect for families, corporate days out or school tours. [thezone.ie](http://thezone.ie)

Unit 1-2 Mullaghboy Industrial Estate, Navan, Co. Meath  
Tel +353 (0) 46 9071623  
E [info@thezone.ie](mailto:info@thezone.ie)

## Tour Guides

### Boyne Valley Tours

Boyne Valley Heritage Tours with Private Driver Guide visiting sites such as Newgrange, Oldbridge House (Battle of the Boyne), Old Mellifont Abbey, Monasterboice, Hill of Tara, Bective Abbey and Trim Castle. Guest collected and returned to their accommodation, bespoke tours to sites throughout the Boyne Valley and beyond. [boynevalleytours.com](http://boynevalleytours.com)

Balgeeth, Ardcah, Co. Meath  
Tel +353 (0) 87 835 4805  
E [BoyneValleyTours@gmail.com](mailto:BoyneValleyTours@gmail.com)

### Boyne Valley Trails

Boyne Valley Trails is a Drogheda based voluntary group which aims to share the beauty, heritage and culture of Ireland's ancient Boyne Valley, through a series of bespoke walks, trails and adventures. Check out the website for details of what's planned! Walks take place in different locations, see website. [boynevalleytrails.ie](http://boynevalleytrails.ie)

Tel +353 (0) 87 254 9107  
E [dustyflanagan@gmail.com](mailto:dustyflanagan@gmail.com)



Causey Farm



Funtasia Waterpark



Newgrange Farm



Tlachtga Abhaile

### Custom Irish Tours

Custom Irish Tours offer award-winning chauffeur driven tours of Ireland (including the Boyne Valley) with a wide range of tours from historical castles and ruins, to more modern-day locations of cities and towns. The company was founded by Derek Smith, an experienced fully licensed and insured driver, historian and tour guide. [customirish tours.com](http://customirish tours.com)

42 Troytown Heights, Navan, Co. Meath  
Tel +353 (0) 86 605 5537  
E [info@customirish tours.com](mailto:info@customirish tours.com)

### Hill of Slane Tours

Free 40 min guided tours of the wonderful Hill Of Slane. Available every weekend in the summer. Meeting point at the gates to the Hill of Slane - ample parking available for cars or buses. Group bookings are also available by request, please email. [visitslane.ie](http://visitslane.ie)

Slane Hub, No. 2 Main Street, Slane, Co. Meath  
Tel +353 (0) 41 982 4000  
E [hillofslanetours@yahoo.ie](mailto:hillofslanetours@yahoo.ie)

### Ireland-At Your Leisure

Private, fun and luxurious day and multi-day tours of Ireland including Boyne Valley, Northern Ireland, Cliffs of Moher etc. Tours conducted by Richard, a professional, caring guide who will look after all abilities and age groups. His farming background gives him great insights into the heritage of the Irish landscape. [irelandatyourleisure.ie](http://irelandatyourleisure.ie)

Johnsfort House, Clonmellon, Navan, Co. Meath  
Tel +353 (0) 86 373 3644  
E [richard@irelandatyourleisure.ie](mailto:richard@irelandatyourleisure.ie)

### Kells Walkabout Tours

Volunteers will take you on a free walking tour of their town. From the early medieval monastic site to the Georgian quarter, our volunteers will share with you the local stories and hidden gems of Kells, Co. Meath.

Kells Courthouse, Headfort Rd, Kells, Co. Meath, A82 RY62  
Tel +353 (0) 46 924 7508  
E [kellscourthouse@discoverboynevalley.ie](mailto:kellscourthouse@discoverboynevalley.ie)

### My Ireland Family Heritage

Genealogist and Fáilte Ireland-approved national tour guide Seán Quinn and team provide customized itineraries for historic tours of the Boyne Valley and Ireland. Winner of Meath Awards for Boyne Valley Best Tourism Experience and Best Overall Tourism Business - Tourism, 2019. Ranked 6th worldwide by USA Today for best ancestry tour company. [myirelandheritage.com](http://myirelandheritage.com)

Unit 3, The Village Pump, Batterstown, Co. Meath  
Tel +353 (0) 86 7878 892 / (0) 86 198 0402  
E [info@myirelandheritage.com](mailto:info@myirelandheritage.com)

### Royal Historical Tours

Ian is a qualified tour guide who will guide you on a fantastic tour to experience the beauty of the Boyne Valley, including the historic sites of Newgrange, Monasterboice, Trim Castle, Slane Hill, Slane Distillery and many more. Customised packages to see the sights throughout Ireland, and collection is available from your accommodation. [royalhistoricaltours.com](http://royalhistoricaltours.com)

Unit 3, The Village Pump, Batterstown, County Meath  
Tel +353 (0) 867 347 094 / 861 980 402  
E [ian@royalhistoricaltours.com](mailto:ian@royalhistoricaltours.com)

### Sacred Sites

Guided Spiritual Tours at Hill of Tara, Uisneach and Loughcrew. Private and Public Tours available. Sacred Sites Guided Meditation Classes at Hill of Tara Open Studio forging a deep spiritual and energetic connection with our sacred sites and the archetypal energies of the Tuatha Dé Danann. Exploring our ancient past and bringing it back to life. [sacredsites.ie](http://sacredsites.ie)

Hill of Tara Open Studio, Navan, Co. Meath  
Tel +353 (0) 86 606 9201  
E [treasa@sacredsites.ie](mailto:treasa@sacredsites.ie)

### Tlachtga Abhaile

Tlachtga is the sacred hill outside Athboy where Halloween began as the Samhain festival. Actress, singer and tour guide Fiona Dalton, as the goddess Tlachtga, brings this legend alive in an performance of story and song. Tlachtga Abhaile can be booked for events and offers a new walking tour of Athboy. For more for details see [Facebook](https://www.facebook.com/tlachtgaabhaile) and [Instagram](https://www.instagram.com/tlachtgaabhaile)

Various venues around the Boyne Valley  
Tel +353 (0) 85 717 9005  
E [gmeade@stayintrim.ie](mailto:gmeade@stayintrim.ie)

## Tour Operators

### Love Irish Tours

Love Irish Tours is an Inbound Tour Operator based in County Meath. We specialise in custom-made tours of Ireland including self-drive, private escorted and coach tours. We provide tailor-made packages that include accommodation, attractions, car hire and private chauffeur hire and much more. [loveirish tours.com](http://loveirish tours.com)

Unit 8 Scurlockstown Business Park, Trim, Co Meath  
Tel +353 (0) 1888-508-6639 / (0) 46 943 7555  
E [edel@loveirish tours.com](mailto:edel@loveirish tours.com)

### Zatino Travel

Ireland China International Travel Services Ltd (I-CITS) is specialized in inbound Chinese visitors to the island of Ireland. We focus on tailor-made tours, film-themed tours including Game of Thrones and Star Wars, photography workshops, high-ranking governmental visits, business investors' inspections, study tours, event organizing, and conference arrangement. [cits.ie](http://cits.ie) [citsie.cn](http://citsie.cn)

15 Harcourt Street, Dublin 2, D02 XY47  
Tel +353 (0) 76 888 9858  
E [info@cits.ie](mailto:info@cits.ie)



White River Karting



Highlanes Art Gallery

# Poetic inspiration

## Music, Arts and Irish Culture

A haven and an inspiration for art and artists for centuries, the Boyne Valley boasts the very best from Neolithic art to contemporary art. It is rich in song, music, dance, theatre, poetry, visual art, literature, architecture and film.

### Arts Centres, Galleries, Exhibitions & Theatres

#### Boyne Valley Discovery Point at the Kells Courthouse

The Boyne Valley Discovery Point at the renovated 19th century Kells Courthouse designed by prominent Irish architect Francis Johnston reopened in 2018. Discover the Birthplace of Ireland's Ancient East with tales of Viking raids, the carving of some of the finest high crosses in Ireland, the craftsmanship of the Kells Crozier and the Marquesses of Headfort who transformed Kells

Kells Tourism and Cultural Hub,  
Kells Courthouse, Kells, Co. Meath  
Tel +353 (0) 46 924 7508  
E [kellscourthouse@discoverboynevalley.ie](mailto:kellscourthouse@discoverboynevalley.ie)

#### Copter View

Copter View is an aerial photography and videography specialist company based in Meath, providing unique views of property and landscapes. [copterview.ie](http://copterview.ie)

Clonee, Co. Meath  
Tel +353 (0) 86 867 2339  
E [info@copterview.ie](mailto:info@copterview.ie)

#### The Barbican Centre

The Barbican is a multi-purpose hall which acts as a cultural beat in the heart of the town. It is used by both the public, private and community sectors to host a range of events including shows, classes, photography exhibitions, public meetings, training etc. [thebarbican.ie](http://thebarbican.ie)

Williams Street, Drogheda, Co. Louth  
Tel +353 (0) 41 980 7416  
E [info@thebarbican.ie](mailto:info@thebarbican.ie)

#### Droichead Arts Centre

A multi-disciplinary centre offering an extensive programme of theatre, music, film, visual arts, opera, dance, comedy, literature, family/children, outreach and festivals. The Centre comprises of two premises including a modern 169 seat theatre, a bright contemporary visual arts gallery and café/bar on Stockwell Street and an 18th century Georgian style townhouse, Barlow House on West Street which hosts rehearsal rooms, meeting rooms, and artist & print studios. [droichead.com](http://droichead.com)

Stockwell Street, Drogheda, Co. Louth  
Tel +353 (0) 41 983 3946  
E [info@droichead.com](mailto:info@droichead.com)

#### Emily McCormack- Artist

Located outside Dunboyne, Co. Meath, Emily McCormack – Artist runs an oil painting school offering various workshops. Complete beginners are welcome and paintings are available to buy from her website, by appointment in her gallery or every Sunday from 112-113 Merrion Square's Open-Air Art Gallery, Dublin. [emilymccormack-artist.ie](http://emilymccormack-artist.ie)

Warrenstown, Kilcock, Co. Meath, W23 TVH7  
Tel +353 (0) 86 838 2740  
E [emily@emilymccormack-artist.ie](mailto:emily@emilymccormack-artist.ie)

#### The Gateway to the Boyne Valley Exhibition

The Gateway to the Boyne Valley Exhibition aims to inspire and motivate visitors in an emotive way to explore the 33 heritage sites along the Boyne Valley Drive. Delve deeper to learn more about these sites within the wider Ireland's Ancient East. Enjoy the interactive display which contains videos of heritage sites such as Newgrange, Trim Castle, Millmount Museum plus beautiful photography. Children will enjoy drawing on the interactive screens. [discoverboynevalley.ie](http://discoverboynevalley.ie)

The Tholsel, West Street, Drogheda  
Tel +353 (0) 41 987 2843  
E [droghedatouristoffice@gmail.com](mailto:droghedatouristoffice@gmail.com)

#### Highlanes Municipal Art Gallery

A state-of-the-art facility housed within the former Drogheda Franciscan Church. The bright and open spaces present multiple exhibitions every year drawing upon artists renowned both nationally and internationally, as well as the magnificent Drogheda Municipal Art Collection. Visitors are welcome to enjoy the art, the architecture, and the gallery's fine café. [highlanes.ie](http://highlanes.ie)

St. Laurence Street, Drogheda, Co. Louth  
Tel +353 (0) 41 980 3311  
E [info@highlanes.ie](mailto:info@highlanes.ie)

#### Perfect Stills Photography

Perfect Stills Photography have been approved Google Street View Trusted Photographers. Providing aerial and Google Inside 360 Virtual Reality Tours. [perfectstills.com](http://perfectstills.com)

Navan, Co. Meath  
Tel +353 (0) 86 174 0454  
E [Aubrey@perfectstills.com](mailto:Aubrey@perfectstills.com)

#### Skylight Gallery

View a collection of original oils and watercolours and perhaps take away a painting which you can enjoy for years to come. They can help you choose a gift for a presentation, retirement or special occasion. - well worth a visit! Exit 7 off the M1, signposted Julianstown. [skylightgallery.net](http://skylightgallery.net)

Julianstown Golf Course, Julianstown, Co. Meath  
Tel +353 (0) 41 981 1953 / (0) 87 417 8290  
E [dinah.berrill@gmail.com](mailto:dinah.berrill@gmail.com)

#### Solstice Arts Centre

Regular exhibitions & workshops from international, national and local artists, open Tuesday - Saturday 11:00am - 4:00pm. The 320-seat theatre hosts the best of local talent as well as professional theatre, music, ballet, opera, comedy, dance & children's events and houses a 4K surround sound cinema. Solstice café offers fresh, locally sourced food. [solsticeartscentre.ie](http://solsticeartscentre.ie)

Railway Street, Navan, Co. Meath, C15 KWP1  
Tel +353 (0) 46 909 2300  
E [info@solsticeartscentre.ie](mailto:info@solsticeartscentre.ie)

#### Toradh Gallery

Based at Ashbourne Library & Cultural Centre, the Toradh Gallery hosts approx 8 exhibitions per year, by local, national and international artists, along with workshops, artist's talks and demonstrations. Opening Hours: Monday – Friday from 9am - 5pm, Saturday 10am - 5pm. [www.meath.ie](http://www.meath.ie) for full details on opening hours and exhibitions. [meath.ie](http://meath.ie)

Killeglad Street, Ashbourne Co. Meath  
Tel +353 (0) 1 835 8002  
E [artsoffice@meathcoco.ie](mailto:artsoffice@meathcoco.ie)

#### Toradh2 Visual Art Gallery

Located in the newly renovated Kells Courthouse, the Toradh 2 Gallery, coupled with the interactive Boyne Valley heritage display and the proposed upstairs 'artists' hub' arena, is a key addition to the cultural landscape of the county.

Kells Courthouse Tourism and Cultural Hub, Headfort Rd, Kells, Co. Meath, A82 RY62  
Tel +353 (0) 46 909 7414

#### The Venue Theatre

The theatre presents dance and music, as well as the best of local and national professional and amateur companies. Our vibrant programme also includes puppetry, multimedia, clowning and comedy. [thevenue ratoath.ie](http://thevenue ratoath.ie)

Main Street, Ratoath, Co. Meath  
Tel +353 (0) 1 689 5600  
E [info@ratoathcc.ie](mailto:info@ratoathcc.ie)

### Cultural, Heritage and Wellness Attractions

#### An Tobar Retreat and Spirituality Centre

An Tobar Spiritan Retreat Centre nestled in the townland of Ardbraccan approx. 3km from Navan town. Available for groups/ individuals who can expect to find welcome, hospitality, healing & hope, woodlands & walkways. The centre offers Retreats/ Workshops year-round. [antobar.ie](http://antobar.ie)

Ardbraccan, Navan, Co. Meath  
Tel +353 (0) 46 907 8973  
E [antobarnavan@gmail.com](mailto:antobarnavan@gmail.com)

#### Battle of the Boyne Visitor Centre - Oldbridge Estate

An international battle fought in 1690 between King William III and his father in law King James II, brought to life using a laser battle site model, audio visual film, real and replica weaponry and interactive guided tours. The Visitor Centre is located in the restored 18th century Oldbridge House surrounded by Victorian Gardens and battle site walks. [battleoftheboyne.ie](http://battleoftheboyne.ie)

Battle of the Boyne Visitor Centre, Oldbridge House, Drogheda, Co. Meath  
Tel +353 (0) 41 980 9950  
E [battleoftheboyne@opw.ie](mailto:battleoftheboyne@opw.ie)

#### Blackfriary Community Heritage Archaeology Project

The Black Friary is a medieval Dominican Friary in the historic town of Trim, under excavation since 2010. Tours of the excavation site are available from the archaeologists throughout the summer. Follow on Social Media for details of Open Days Book via [bafs.ie](http://bafs.ie)

Blackfriary Archaeology Field School, Griffin Park, Trim, Co. Meath  
Tel +353 (0) 85 756 3671  
E [info@bafs.ie](mailto:info@bafs.ie)

#### Brú na Bóinne Visitor Centre

Brú na Bóinne is a UNESCO World Heritage Site and one of the largest and most important prehistoric megalithic sites in Europe. Dating from the Neolithic or New Stone Age, the passage tombs of Brú na Bóinne are about 5000 years old. The Visitor Centre interprets the monuments of Newgrange, Knowth and Dowth. Advance booking essential. [heritageireland.ie](http://heritageireland.ie)

Donore, Co. Meath, A92 EH5C  
Tel +353 (0) 41 988 0300  
E [brunaboinne@opw.ie](mailto:brunaboinne@opw.ie)

#### Drogheda Museum Millmount & Martello Tower

Millmount's 'cup and saucer' offers spectacular views over the town. Lovingly restored, the 1808 Martello-type tower houses a permanent exhibition of military memorabilia, John Boyne O'Reilly's death mask and a superb new exhibition on the Battle of Waterloo. The neighbouring Drogheda Museum contains a wealth of local artefacts. [millmount.net](http://millmount.net)

Millmount Complex, Drogheda, Co. Louth  
Tel +353 (0) 41 983 3097  
E [info@droghedamuseum.ie](mailto:info@droghedamuseum.ie)

### Francis Ledwidge Museum & War Memorial Centre

The birthplace of poet Francis E Ledwidge is a perfect example of a 19th century farm labourer's cottage. Close to the village of Slane, the museum houses the poet's works and artefacts from World War I, along-side memorabilia of the period. Its exhibition portrays the poet's life in picture and text from his birth to his death at Ypres, Belgium, in July 1917. [francisledwidge.com](http://francisledwidge.com)

Janeville, Slane, Co. Meath, C15 DK82  
Tel +353 (0) 41 982 4544  
E [info@francisledwidge.com](mailto:info@francisledwidge.com)

### The Hot Box Sauna

We are an outdoor sauna experience based on the bank of the river Boyne at Bective Mill House. We offer 55 minute sauna and hot tub sessions where guests switch between the sauna or hot tub and the river Boyne for hot and cold therapy which leaves them feeling brand new! [thehotboxsauna.ie](http://thehotboxsauna.ie)

Bective Mill House, Balina, Navan, Co Meath  
Tel +353 (0) 85 277 2599  
E [info@thehotboxsauna.ie](mailto:info@thehotboxsauna.ie)

### Killua Castle

Killua Castle is located in the most romantic demesne in Ireland with links to Sir Walter Raleigh and Lawrence of Arabia. We are dedicated to sharing our greatest passions: history, art, environmental conservation, regenerative farming, and gastronomy. Coming soon Twelve Points Restaurant and farm shop. See website for opening hours and guided tours. [killuacastle.com](http://killuacastle.com)

Clonmellon Lodge, Killua Castle, Clonmellon, Co. Meath  
Tel +353 (0) 87 943 6727  
E [info@killuacastle.com](mailto:info@killuacastle.com)

### Loughcrew Megalithic Centre

A warm welcome awaits you at Loughcrew Megalithic Centre, located close to the Loughcrew Cairns. These ancient monuments can be visited on your own or with one of our experienced tour guides. On site we also have Maggie Heaney's Heritage Cottage (a traditional Irish cottage built in the 1700's), cafe, gift shop, campsite and glampingsite. [loughcrewmega.com](http://loughcrewmega.com)

Summerbank, Oldcastle, Co. Meath  
Tel +353 (0) 86 736 1948 / 87 211 3624  
E [info@loughcrewmega.com](mailto:info@loughcrewmega.com)

### Slane Castle

Situated in a dramatic setting by the river Boyne, Slane Castle is one of the most exciting buildings architecturally in Ireland. Home to the Conyngham family since 1703, the historical tour takes in the 18th century interiors and covers the family's colourful history, including the famous rock concerts. Open throughout the year, tours available and courtyard Café. [slanecastle.ie](http://slanecastle.ie)

Slane, Co. Meath  
Tel +353 (0) 41 988 4477  
E [info@slanecastle.ie](mailto:info@slanecastle.ie)

## Language Schools

### Navan School of Languages

Classes in French, German and Spanish for adults, secondary school students and children. For foreign students wishing to learn English, we also provide classes leading to a recognised qualification. We cater for people who wish to learn for fun and for exam purposes, so why not contact us to book your place today. [navanschooloflanguages.ie](http://navanschooloflanguages.ie)

St. Anne's, Brew Hill, Navan, Meath  
Tel +353 (0) 46 902 9526  
E [info@navanschooloflanguages.ie](mailto:info@navanschooloflanguages.ie)



Battle of the Boyne Visitor Centre



# Retail therapy

Crafts, gifts and local produce

Boyne Valley Wools

## Shopping, Crafts, Gifts and Farm Produce

### Boann Irish Felt Designs

A collection of vibrant artworks, wall hangings, shawls & accessories. Handmade in Slane by Caoimhe Tuthill, all work is made using the ancient craft of wet felt making. Inspired by the ancient sites of the Boyne Valley & Caoimhe's love of nature. A selection is available in Shine Craft Shop, Slane. Lessons available. [boann.ie](http://boann.ie)

Caoimhe Tuthill  
Cashel, Slane, Co. Meath  
Tel +353 (0) 87 241 9315  
E [info@boann.ie](mailto:info@boann.ie)

### Boyne Valley Wools

A unique experience in wool craft - watch the Jacob sheep grazing the fields and see their wool spun into yarn and woven or knit. The whole process is done by hand with demonstrations daily. Family friendly, wheelchair accessible, free of charge. Open February to December - Hoot your horn for the shop. [boynevalleywools.com](http://boynevalleywools.com)

Alison Fullam Gogan  
The Leck, Donore, Co. Meath A92TFD0 GPS N53.6922 W6.457  
Tel +353 (0) 41 988 0530 / 86 893 1692  
E [boynevalleywools@gmail.com](mailto:boynevalleywools@gmail.com)

### Castle Crafts

Castle Crafts is run by a mother/ daughter duo who proudly support over 100 local crafters by creating an outlet to showcase their work, talent and skills in ceramics, glassblowing, one-of-a-kind art pieces, beautiful home fragrances, handmade jewellery and artisan food among many other Irish crafts. [castlecraftstrim.com](http://castlecraftstrim.com)

Trim, Co. Meath  
Tel +353 (0) 46 948 6667  
E [castlecraftstrim@gmail.com](mailto:castlecraftstrim@gmail.com)

### Jan Muyliaert Irish Harps

Jan has been making musical instruments since 1975. His Irish harps are renowned worldwide for their enduring quality of workmanship and sound. Many are played by professional performers and teachers. Native wood is used as much as possible. Carving and marquetry can be added and can also be done on other items. Viewing by appointment only and a waiting list applies. Boyne Marine. The Art of Boat Making - Plans and manuals for sale. [boynemarine.com](http://boynemarine.com) [irishharps.net](http://irishharps.net)

Jan Muyliaert  
Ardraccon, Navan, Co. Meath, C15DE42  
Tel +353 (0) 86 885 7558  
E [irishharps.jan@gmail.com](mailto:irishharps.jan@gmail.com)

### Lucy O' Gorman Ceramics

Unique ceramic pieces, drawing inspiration from the rural setting and the historical landmarks that scatter the Boyne Valley. Lucy's pottery, ranges from functional, dishwasher and microwave safe crockery and tableware to sculptural and commissioned pieces. Lucy's own technique of using glass in her pottery gives her work a distinctive and vibrant effect. Her love of excitement and need for the unpredictable comes through in her more abstract pieces and raku. [discoverboynevalley.ie](http://discoverboynevalley.ie)

Lucy O'Gorman  
Rathmaiden, Slane, Co. Meath  
Tel +353 (0) 87 252 1393  
E [ogormanlucy@gmail.com](mailto:ogormanlucy@gmail.com)

### Maguires Café & Gift Shop, Hill of Tara

A 7th generation family-run food and shopping destination located at the Hill of Tara. Home to an eclectic mix of lovingly curated local and International crafts, gifts, fashion, Aran knits, Celtic jewellery and more. After a little retail therapy, call into our adjoining café for some delicious homemade treats or Irish Coffees. Open 7 days 09.30 to 18.00. [hilloftara.com](http://hilloftara.com)

Hill of Tara, Tara, Co Meath C15AVY8  
Tel +353 (0) 46 902 5534  
E [info@hilloftara.com](mailto:info@hilloftara.com)

### Newbarn Farm

Just outside Ashbourne, Newbarn Farm is home to a Farm Shop selling homegrown and locally sourced fruit and vegetables alongside a selection of artisan farm produce. They have an open farm where customers can meet farm animals and the onsite Donkey Shed Restaurant is a great place for lunch or a snack. [newbarnfarm.ie](http://newbarnfarm.ie)

Newbarn Farm, Donaghmore, Ashbourne, Co. Meath  
Tel +353 (0) 1 849 9337  
E [info@newbarnfarm.ie](mailto:info@newbarnfarm.ie)

### Pat's Arts Studio

Located in Slane Arty Quarter, Pat Doyle, a local artist, paints and exhibits his works in a friendly, inviting studio. Works include a broad selection of oil paintings and drawings. Seascapes and cityscapes are included, as are figures and a variety of themed works. Browse and chat with no obligation. You are also invited to view his extensive Adventures Travelogue. [patsartstudio.ie](http://patsartstudio.ie)

1 Newgrange Mall, Slane, Co. Meath, C15 CVA4  
Tel +353 (0) 87 2445 246

### Sage and Stone Farm Shop

Sage & Stone is a family-run gift shop and café based on the family farm just outside Duleek. Visit for quirky and quality gifts, fresh bread, homemade cakes, take-home meals and more. Don't forget our takeaway coffee and treats! [sageandstone.com](http://sageandstone.com)

The Farm, Newlanes, Duleek Co. Meath  
Tel +353 (0) 41 981 4362  
E [info@sageandstone.com](mailto:info@sageandstone.com)



## Festivals & Events

### Spring

Drogheda Arts Festival  
Fairyhouse Easter Racing Festival  
Loughcrew Spring Equinox  
St. Patrick's Day Festivals

### Summer

Blue Jean Country Queen Festival  
Boyne Adventure Race  
Boyne Music Festival  
Boyne Valley Film Festival  
Boyne Viking Experience at Slane Castle  
Dogitude Festival  
DRAWDA | Mythical Midsummer Festival 2023  
Drogheda Classical Music Concert Series  
Dunderry Fair Day  
Fairy Festival at Loughcrew Estate  
Heritage Week 12 -20 August 2023  
Hinterland Festival Kells  
Kells Type Trail  
Living History Weekend, Irish Military War Museum  
Moynalty Country Music Festival  
Moynalty Steam Threshing Festival  
Navan Choral Festival  
Nobber Show and Fair  
Oldcastle Agricultural Show  
Otherside Festival  
Scurlogstown Olympiad  
St Colmcille Illuminations Kells  
Trim Haymaking Festival

### Autumn

Dunshaughlin Harvest Festival  
Farmaphobia  
Laytown Strand Races  
Leanbh Children's Festival  
Loughcrew Autumn Equinox  
Meath Film Festival  
O'Carolan Harp Festival  
Royal Meath Agricultural Show  
Púca Festival  
Samhain Food Festival 4th-6th November 2023  
Spirits of Meath Halloween Festival

### Winter

A Classical Christmas Evening (Trim)  
Christmas markets across the Boyne Valley

### Ongoing Events

(please refer to individual websites for dates and details)  
Boyne Valley Food Series  
Bellewstown Races  
Droichead Arts Centre  
Fairyhouse Racecourse  
Highlanes Gallery  
Meath Beo Music Series  
Navan Laughs Comedy at The Central Bar  
Navan Racecourse  
Slane Food Circle  
Solstice Arts Centre  
The Venue Theatre, Ratoath  
Winter Solstice at Newgrange

For an online calendar of Boyne Valley events and festivals check out [discoverboynevalley.ie](http://discoverboynevalley.ie) for full details

Boyne Music Festival



Hinterlands Festival, Kells



Boyne Adventure Race



Moynalty Steam Threshing Festival



DRAWDA Urban Art Trail

# What's happening in the Boyne Valley

# A Festival of fun

# Halloween in the Boyne Valley



## SPIRITS OF MEATH

HALLOWEEN FESTIVAL

Oct 6 - Nov 6 2023

According to legend, Samhain, the ancient Celtic Festival that we now call Halloween, originated here in Co. Meath in the Boyne Valley more than 2,000 years ago. Samhain was said to mark the harvest and a time of transition, with feasting and celebration as the long winter nights approached.

To this day the Boyne Valley has remained the home of Halloween, the modern equivalent of Samhain. Whether is 'Fun by Day' or 'Fright by Night', spine-tingling fun awaits for young and old alike in the Spirits of Meath festival. Enter if you dare! [spiritsofmeath.ie](http://spiritsofmeath.ie)

# Púca

Come alive in the dark



With music, fire, feasting and merriment across Ireland's Ancient East, join us to celebrate the Celtic New Year with the spirits of Halloween. Roaming the darkness like a shadowy spectre, the shape-shifting spirit of Púca comes alive!

Through the spectacular nights at Púca Festival, we salute the Halloween spirits through folklore, food, comedy and music reopening the pathways of reflection and celebration carved by travellers over 2,000 years ago, and lighting up the night sky with awe-inspiring and unearthly illuminations. For up-to-date details see [pucafestival.com](http://pucafestival.com)



# Easy access

to the heritage capital of Ireland



## Getting Here & Getting Around

### Holtons Coaches Ltd

Tours and airport transfers, coach and mini bus hire, outings, day trip tours. Small/large groups, keen rates, call for a quote. Covers Enfield area.

Cloneycavan, Ballivor, Co. Meath  
Tel +353 (0) 46 954 6471 / (0) 87 253 8848  
E [holtonscoaches@gmail.com](mailto:holtonscoaches@gmail.com)

### Rambling Rover Campervans

Our fleet of brand-new, high-standard campervans has a range of options that can accommodate from 1 to 6 people, perfect for families (including your dog), friends, or couples. With bike rental also available we are a one stop shop for your road trip, staycation, or Irish adventure. [ramblingrover.ie](http://ramblingrover.ie)

Slane, Co. Meath, C15PY76  
Tel +353 (0) 86 045 3932 / (0) 1 604 1900  
E [info@ramblingrover.ie](mailto:info@ramblingrover.ie)

See also pp. 19-20 for chauffeur-driven tour guide options.

Rambling Rover Campervans



### Useful Travel Links

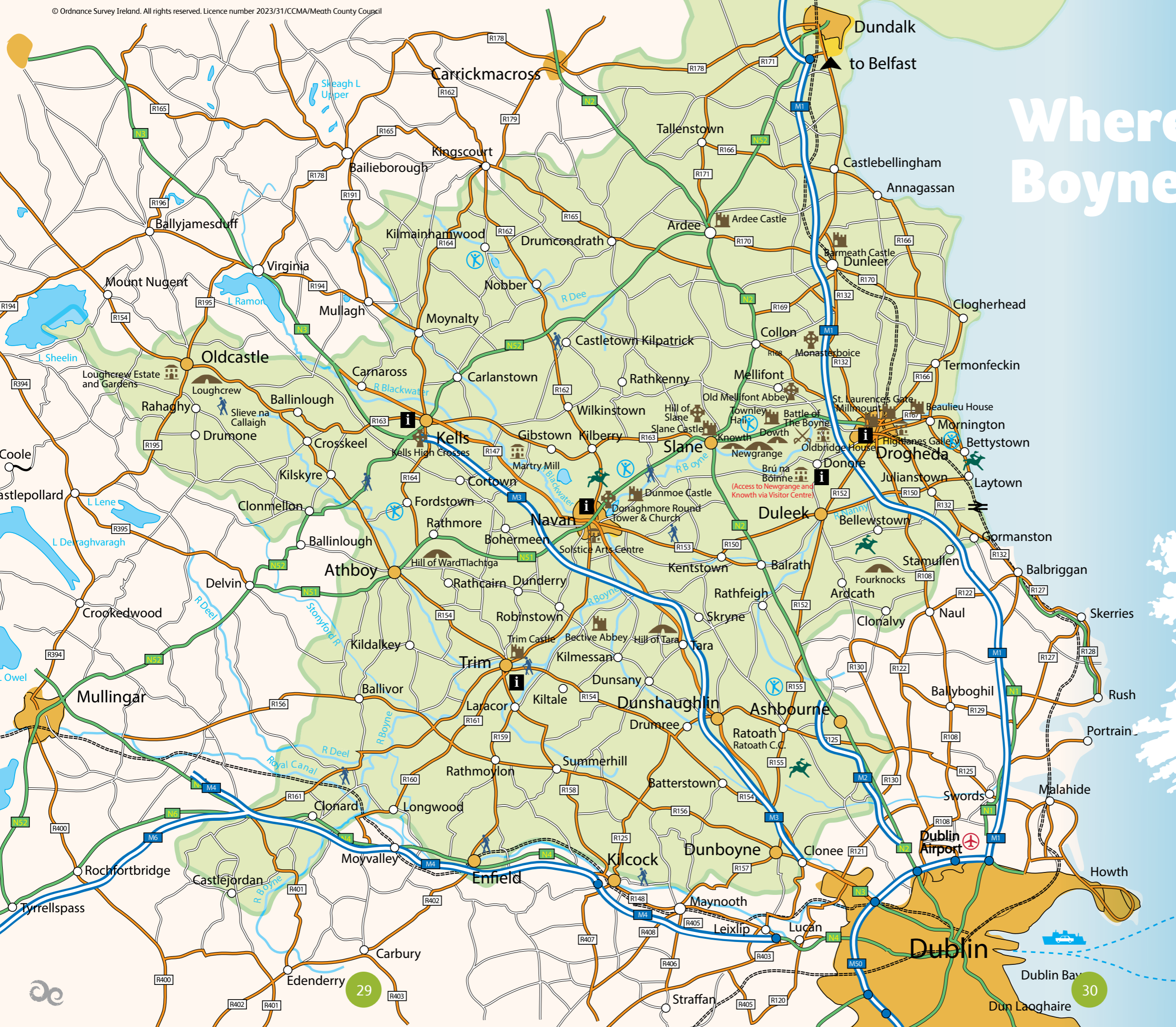
Bus Éireann	<a href="http://buseireann.ie">buseireann.ie</a>
Dublin Airport	<a href="http://dublinairport.com">dublinairport.com</a>
Irish Rail	<a href="http://irishrail.ie">irishrail.ie</a>
TFI Journey Planner	<a href="http://transportforireland.ie">transportforireland.ie</a>





# Where is the Boyne Valley?

Travelling to and throughout the Boyne Valley has never been easier. Just 20 minutes north of Dublin International Airport in the North East of Ireland, the Boyne Valley can boast a unique and enviable location at the hub of four major motorways – the M1, M2, M3 and M4. Convenient to ferry ports in Dublin and Belfast, with regular train services from Dublin/Belfast stopping at Laytown, Drogheda and Dunboync and frequent bus services throughout the Boyne Valley from Dublin, planning your visit couldn't be easier.



Useful links for travel schedules  
Air: [aerlingus.com](http://aerlingus.com) [ryanair.com](http://ryanair.com)  
Ferry: [irishferries.com](http://irishferries.com) [stenaline.ie](http://stenaline.ie)  
[poirishsea.com](http://poirishsea.com) [poferries.com](http://poferries.com)  
Rail: [irishrail.ie](http://irishrail.ie)  
Bus: [buseireann.ie](http://buseireann.ie)









### Loughcrew Cairns

Loughcrew Cairns are a group of 30 passage tombs and the site is one of the most important prehistoric cemeteries in Ireland. Older than the pyramids of Egypt dating from 3200 BC, much of Europe's megalithic art can be seen there. Don't miss the spectacular views.

Oldcastle, Co. Meath  
Tel +353 (0) 41 988 0300 / (0) 87 0524975 (June - August)  
Tour guides on site during the summer.  
heritageireland.ie



### Old Mellifont Abbey

Mellifont Abbey was one of the wealthiest and most influential monastic houses in medieval Ireland. St. Malachy along with a community of Irish and French monks, trained at Clairvaux, Burgundy, founded this beautiful abbey, the first Cistercian Abbey in Ireland in 1142.

Tullyallen, Co. Louth  
Tel +353 (0) 41 982 6459  
Tour guides on site during the summer.  
heritageireland.ie



### Monasterboice

At Monasterboice there are two of the finest High Crosses (Celtic Crosses) in Ireland – the South Cross (Cross of Muiredach) and the West Cross (Tall Cross) – both of which date from the 9th or 10th centuries. Today the image of the High Cross is recognised internationally as a symbol of Irish cultural heritage.

Monasterboice, Co. Louth  
Tel +353 (0) 41 987 2843  
Open All year



### St. Laurence's Gate

St. Laurence's Gate, which led to the Friary of St. Laurence in Drogheda, is widely regarded as one of the finest of its kind in Europe. It consists of two lofty circular towers, connected together by a wall, in which there is an archway, part of the wider walls of medieval Drogheda.

drogheda.ie

Monasterboice

### Hill of Slane

Slane is one of the most attractive hillside estate villages in Ireland. It was created in the 1760's by the Conynghams of Slane Castle and is situated on the River Boyne. The Hill of Slane is the location where, according to legend, St. Patrick lit the Paschal fire in defiance of the pagan High Kings at Tara and so, introduced Christianity to Ireland.

Slane, Co. Meath  
Open All year. Guided tours available – booking required, contact the Slane Hub 041 982 4000



Mellifont

Donore

Drogheda

Oldcastle

Ballinlough

Kells

Navan

### Newgrange and Knowth (Brú na Bóinne)

Brú na Bóinne is a UNESCO World Heritage Site and one of the largest and most important prehistoric megalithic sites in Europe. Dating from the Neolithic or New Stone Age, the passage tombs of Brú na Bóinne are about 5,000 years old. The newly refurbished Visitor Centre interprets the monuments of Newgrange, Knowth and Dowth while a new exhibition centre at Knowth showcases the largest concentration of megalithic carved stone art in Western Europe.

Donore, Co. Meath, A92 EH5C  
Tel +353 (0) 41 988 0300  
Open Access all year. Access to monuments through Brú na Bóinne Visitor Centre only. Pre-booking essential for Newgrange chamber tour (see website)  
heritageireland.ie



### Kells Round Tower & High Crosses

Early monastic settlement where the High Crosses depict biblical scenes and Celtic patterns, representing early Irish Christianity. Five stunning examples can be found in Kells including the famous Market Cross. Kells is also associated with the Book of Kells, probably the most famous of Irish illuminated manuscripts.

Kells, Co. Meath  
Tel +353 (0) 46 924 7508  
Open Access all year to Monastic sites. See Kells Courthouse for walking tours and information on access to Spire of Lloyd.



Athboy

Don't Forget  
book your ticket at heritageireland.ie

### Trim Castle

Built by Hugh de Lacy in 1173 this is the largest Anglo-Norman castle in Ireland. In medieval times, the castle stood like an imposing stone sentinel and powerful symbol of Norman strength. In modern times, the castle remains a strong focal point in Trim town and has been used in the film Braveheart with Mel Gibson.

Trim, Co. Meath  
Tel +353 (0) 46 943 8619  
Open Open daily from Mid Feb – end of October. From November to mid Feb, open weekends for tours, and once a day during the week (contact Trim Visitor Centre for details).  
heritageireland.ie



Bective

Killmessan



### Hill of Tara

The Hill of Tara was the seat of the High Kings of Ireland and the most sacred site in ancient Ireland. Stunning views of the surrounding landscape.

Navan, Co. Meath  
Tel +353 (0) 46 902 5903 / 41 988 0300  
Visitor Centre open during the summer. Hill open all year.  
heritageireland.ie



### Battle of the Boyne Visitor Centre - Oldbridge Estate

An international battle fought on 1st July 1690 (old calendar) between King William III and his father in law King James II, brought to life using a laser battle site model, audio visual film, real and replica weaponry and interactive guided tours. The Visitor Centre is located in the restored 18th century Oldbridge House surrounded by Victorian Gardens and battle site walks. Yearly events programme.

Battle of the Boyne Visitor Centre, Oldbridge House, Drogheda, Co. Meath  
Tel +353 (0) 41 980 9950  
E battleoftheboyne@opw.ie  
Open All Year, Admission charge to Visitor Centre. Gardens and battle site walks free of charge. Gift Shop and Tea Room available on site  
battleoftheboyne.ie

# Boyne Valley Drive

Please check individual websites for current opening times and availability.



# Discover Brú na Bóinne

## Explore the UNESCO World Heritage Site of Newgrange, Knowth and Dowth

The World Heritage Site of Brú na Bóinne is Ireland's richest archaeological landscape and is situated within a bend in the River Boyne. Brú na Bóinne is famous for the spectacular prehistoric passage tombs of Knowth, Newgrange and Dowth which were built circa 3200 BC. These ceremonial structures are among the most important Neolithic sites in the world and contain the largest collection of megalithic art in Western Europe.

### Brú na Bóinne Visitor Centre

Brú na Bóinne Visitor Centre is the starting point for all visits to Newgrange and Knowth. Do not go directly to the monuments as you will not gain entry. Visitors are brought via shuttle bus to the monuments at Newgrange and Knowth. Dowth is not part of the tour.

The Visitor Centre exhibition is a fully interactive and newly-refurbished visitor experience exploring the Neolithic culture, landscape and monuments of Brú na Bóinne. Pre-booking tickets is essential. Universal access is limited at the monuments — those who require special assistance or those with mobility issues please contact us in advance of visit. Tours must be booked at [heritageireland.ie](http://heritageireland.ie)

Brú na Bóinne Visitor Centre, Donore, County Meath, A92 EH5C  
Tel: +353 (0) 41 988 0300  
E: [brunaboinne@opw.ie](mailto:brunaboinne@opw.ie)

### Don't Forget

Advance booking essential. Book your ticket at [heritageireland.ie](http://heritageireland.ie)



### Newgrange

Newgrange (c 3,200 BC) is the best-known monument of Brú na Bóinne, predating the ancient pyramids of Giza by 400 years and Stonehenge in England by 1000 years. The passage tomb is surrounded by 97 kerb stones, the most impressive is the large entrance stone which is covered in swirls and designs. Inside the large mound there is a long passage leading into a chamber which branches off three ways. The cremated remains of the dead were laid on large stone basins inside the chamber which usually were accompanied by grave goods.

At dawn on the winter solstice, the shortest day of the year (December 21st), a shaft of sunlight enters the chamber of Newgrange through a specially designed opening over the doorway which illuminates the chamber. On December 21st 1967, Prof M. J. O'Kelly was the first person in modern times to see this now world-famous event.



Brú na Bóinne Visitor Centre

Newgrange

Newgrange

### Knowth

The passage tomb complex lies to the west of Newgrange. The large mound covers two passage tombs placed back to back which is surrounded by 127 massive kerbstones. Outside this large passage tomb there are eighteen small tombs.

Over three hundred decorated stones make up Knowth which represents the greatest concentration of megalithic art in Western Europe. Recurring motifs on these stones include circles serpentine forms and spirals. A new exhibit at Knowth explores the megalithic art of the Boyne Valley, and the story of the archaeologists who discovered it, including the famed Meath archaeologist Prof George Eogan.

### Don't Forget

All access to the monuments is via the Brú na Bóinne Visitor Centre. Do NOT go directly to Newgrange or Knowth.



Knowth

Knowth

### Dowth

Dowth is the least well known of the three monuments, although it compares in size. The mound is surrounded by a kerb of 115 stones and has two tombs facing westwards. On the 21st of December (Winter Solstice), the rays of the setting sun illuminate one of the passages in a similar manner to the rising sun at Newgrange. At least thirty-eight of the stones at Dowth contain megalithic art, the circle being the most common motif used. There is no access to the interior of the Dowth Mound, but visitors may still walk around the outside and admire the monument and views.



Dowth

# More to discover



The mighty River Boyne – source of myth and legend slices through the towns of the Boyne Valley, yet unites this ancient ground. Dip away from the Driving Route and follow its meandering path to find a wealth of other interesting heritage sites, historical curiosities, bustling towns and charming villages just waiting to be discovered.

Trim Castle



Millmount, Drogheda

## Navan

Less than an hour from Dublin, Navan holds the prestigious Purple Flag status for its evening and night-time economy. Explore the wide range of shops and boutiques, or take a break in one of the cosy cafes or pubs. Navan is centrally located in the Boyne Valley, an ideal hub for exploring the region.

There are enjoyable walks around the town, particularly along the Boyne River and canal at the Ramparts. Navan town has a self-guided, signed walking trail – Navan Points of Pride. Commence the walk at the Solstice Arts Centre where brochures on the area can be picked up.

### Other historic sites of interest in the Navan area

Bective Abbey; Donaghmore Round Tower & Church; Ardmulchan Church, Dunmoe Castle, Skryne Church, Ardraccan Church, Athlumney Castle, The Ringfort at Teltown.

### What else...

The annual Navan Choral and Instrumental Festival is one of the primary choral festivals in Ireland, hosting competitions for schools, youth and adult choirs. A great day out for all ages. See [navanchoralfestival.com](http://navanchoralfestival.com). If sport is your thing check out Navan Racecourse and its Racing Festival in November, or the fairways of Royal Tara Golf Club. You will be spoiled for choice with restaurants, gastro pubs and venue bars. The Solstice Arts Centre is one of the Boyne Valley's hubs for the arts. Its programme calendar is packed offering performances in theatre, dance, local arts, ballet, opera and comedy throughout the year. [solstice.ie](http://solstice.ie)

## Trim Heritage Town

Situated on the River Boyne, Trim is dominated by the medieval Trim Castle which is the largest Anglo-Norman Castle in Ireland, built by Hugh de Lacy in 1173. The town is full of medieval sites to explore, including the Yellow Steeple, Sheep's Gate and Newtown Cathedral and Abbey. Winner of Ireland's Tidiest Town in 2022.

### Other historic sites of interest in the Trim area

St. Patrick's Cathedral, St. Mary's Abbey, The Newtown Monuments, Echo Gate, The Yellow Steeple. Nearby is the picturesque village of Athboy, home of the famous Blue Jean Country Queen Festival, and the Hill of Ward, said to be the site of the original Samhain (Halloween) festival.

Drop into the Trim Visitor Centre to learn about the rich history of the town or take the Medieval Armoury Tour: hold a real sword, try on a Norman helmet and handle chainmail.

### What else...

The Annual Scurlogstown Haymaking Festival which takes place in June is just one of a number of festivals and events scheduled for Trim every year, including the Salmon of Knowledge Festival (August) and the Royal Meath Agricultural Show (September). Visit [discoverboynevalley.ie](http://discoverboynevalley.ie) for a full listing of all festivals and events. If you've worked up an appetite you will love Trim, from hotel dining in Trim Castle Hotel and The Knightsbrook Hotel to artisan restaurants like The StockHouse restaurant, Franzinis, Khan Spices or Brogans, all of whom have an avid love of great food and guarantee you won't be disappointed!

## Drogheda

Drogheda truly is the Gateway to the Boyne Valley. A visit to the interactive Boyne Valley exhibition in the historic Tholsel in the centre of the town is a must for anyone exploring the region. Drogheda is an ideal town to explore on foot. Pick up a copy of the Drogheda Visitor Guide (or download from [drogheda.ie](http://drogheda.ie)) and visit St. Oliver Plunkett's head in St. Peter's Church ([saintoliverplunkett.com](http://saintoliverplunkett.com)), see William III's Sword and Mace at the beautiful Highlanes Gallery ([highlanes.ie](http://highlanes.ie)), grab a selfie at St. Laurence's 13th century barbican gate, cross the river and stroll up to Millmount Tower for magnificent views and to visit the Millmount Museum ([millmount.net](http://millmount.net)) or take a stroll to Mornington. After your adventures, take time to enjoy the many cafes, restaurants and bars offering a friendly welcome and wonderful selection of refreshments. Many famous faces visited Drogheda over the years. The Scholars Townhouse Hotel was formerly a school and among its students was John Philip Holland, inventor of the submarine. Meanwhile Woodrow Wilson spent time in the Marcy Hotel whilst visiting Ireland before becoming U.S. President.

### Other historic sites of interest in the Drogheda area

The Millmount Martello Tower offers spectacular views over the town and the entire Boyne Valley. It was at Millmount that Cromwell met his strongest resistance when he laid siege to the town in 1649. The tower was restored by Drogheda Corporation in 2000 and is home to a military exhibition of Ireland's struggles. Open all year. [millmount.net](http://millmount.net)

St. Peter's Church, shrine to St. Oliver Plunkett, is among the finest gothic revival churches in Ireland and is famous for housing the shrine of St. Oliver Plunkett. [saintoliverplunkett.com](http://saintoliverplunkett.com)

Beaulieu House is situated on the banks of the River Boyne and is one of the earliest examples of an unfortified house in Ireland. Tours of Beaulieu House and Gardens available by appointment only. [beaulieuhouse.ie](http://beaulieuhouse.ie)

### What else...

Culture vultures will relish the offering at Droichead Arts Centre, TLT Theatre, The Barbican Theatre, Highlanes Gallery and Beaulieu House & Gardens. See [drogheda.ie](http://drogheda.ie) for a day to day listing of events and festivals. Families will enjoy fun days out at Funtasia Waterpark or trips to the beach.



Navan



Bective Abbey



Tholsel Tourist Office, Drogheda



Kells

### Kells

One of the most unique and special destinations in the world – Kells welcomes you to come explore and become a part of its special story. The heritage town of Kells contains many fine examples of early Christian architecture including the 9th & 10th century High Crosses. It's most famous treasure is the Book of Kells created by the community of St. Columba. This is now located at Trinity College and a facsimile version can be viewed in the Kells Courthouse. The Spire of Lloyd is located outside Kells – this 18th century folly is the only inland lighthouse in Ireland. It was built on a prehistoric hill fort named Mullach Aiti, which is mentioned in the epic Táin Bó Cúailnge. In later years a paupers' graveyard was placed here during the Great Famine. Kells Walk-About Tours with local guides are available free-of-charge, to book please contact the Kells Courthouse.

#### Other historic sites of interest in the Kells area

St. Columba's Church, Kells High Crosses and Round Tower, St. Colmille's Oratory, the Georgian Quarter, St. Kieran's Well.

#### What else...

If you'd ever considered being 'Irish for a Day' you must book a visit to Causey Farm just outside Kells where you can learn to make brown bread, play the bodhrán or milk a cow! Kells has lots to offer the visiting tourist with fantastic accommodation, food, golf, equestrian, theatrical and artistic activities, and is truly the 'town of festivals'. Meet with local food producers as part of Discover Boyne Valley Flavours and their annual Samhain Food Festival or book your place at the Hinterland Festival of Literature and Arts. Explore the latest exhibition at the Toradh2 art gallery in the Courthouse. Why not pay a visit to Donaghpatrick and Teltown – the venues for the ancient Tailteann Games. Donaghpatrick is the site of St. Patrick's Church, which was founded by St. Patrick. Across the road is Rath Airthir, a very impressive monument identified as a trivallate ring fort, which was the royal residence of the kings of the Fir Cúl Breg. Rock art dating back to 2,000BC can be viewed at Cill Tailtean beside Teltown House.

### Oldcastle

This area of the Boyne Valley is one of the few undiscovered regions of Ireland. It has an extensive collection of pre-historic monuments, many of which still await archaeological investigation. The hills around Loughcrew at Oldcastle reveal passage graves, megalithic chambers and decorated stones and are a great place for walkers. Nearby is Loughcrew Estate and Gardens, former home of St Oliver Plunkett and now the location for luxury accommodation, historic gardens, a café, and an annual programme of events for all the family.

#### Other historic sites of interest in the Oldcastle area/ North East area

Loughcrew Cairns, Castletown-Kilpatrick and Nobber – the birthplace in 1670 of Turlough O'Carolan, the renowned composer and harpist. The nearby annual Moynalty Steam Threshing Festival takes place every August and features many country and western music stars, as well as a vast array of other attractions.

#### What else...

Visit Loughcrew Megalithic Centre or Loughcrew House and Gardens, where you are assured a warm welcome and a tasty lunch before exploring a range of on-site facilities. For full details on Equinox Celebrations, the Loughcrew Fairy Festival and many more events, visit [discoverboynevalley.ie](http://discoverboynevalley.ie)

### Slane

Slane is one of the most attractive hillside estate villages in Ireland. It was created in the 1760's by the Conynghams of Slane Castle and is situated on the River Boyne. The Hill of Slane is the location where St. Patrick lit the Paschal fire in defiance of the pagan High Kings at Tara and so, introduced Christianity to Ireland. The site is open all year.

#### Other historic sites of interest in the Slane area

Slane Abbey, The Ledwidge Cottage Museum and The Parochial House, Slane. Follow the road to its neighbouring town Duleek and visit St. Cianan's Church, St. Mary's Abbey and the High Crosses. Slane Castle is the residence of The Marquess Conyngham and is internationally famous for its summer music concerts. Guided tours of Slane Castle are available. A new multi-million euro distillery has recently opened on the grounds of the estate, producing the triple-casked Slane Whiskey with guided tours also available. Tel: 046 903 0600 [slanecastle.ie](http://slanecastle.ie) [slaneirishwhiskey.com](http://slaneirishwhiskey.com)

#### What else...

Enjoy a meal and/or stay at The Conyngham Arms Hotel or Tankardstown House before your visit to Slane Castle or White River Karting. Lots of accommodation choices are available from self-catering, hosteling and camping at Slane Farm Cottages or try something completely new and stay in the Lime House Eco Guest House at Rock Farm Slane or in a Yurt of your choice on the same site. Don't forget to check out the Slane Food Circle, which offers visits to artisan food/drink producers located in the heart of the Boyne Valley.

### Boyne Valley Coast

Discover the Boyne Valley Coast. Choose from Mornington, Bettystown, Laytown or Gormanston – neighbouring villages linked by a stretch of beautiful beach ideal for outdoor activity, making sandcastles or taking a dip in the sea. In Louth, choose from Seapoint, Clogherhead, Baltray and Port beaches. The Boyne Valley Coast with its wide safe sandy beaches is regarded across Ireland and Europe as one of the best locations in Ireland for beach based sports.

#### What else...

The Laytown Strand Races are breathtaking and occupy a unique position in the Irish and English racing calendar as it is the only race event run on a beach under the rules of the Turf Club. You may wish to spend the whole afternoon on the beach but there's more to Bettystown than just the sea and sand. For luxury self catering accommodation you must check out 'The Cottages', Winner of the Best Beach Holiday Home in Europe Award for 2016, The Cottages consist of six exclusive 300 year old thatched holiday cottages nestled in private, gated flower gardens directly on the beach. Superb luxury accommodation ideally located for your dream holiday, just 25 minutes from Dublin Airport. [cottages-ireland.com](http://cottages-ireland.com)

### Boyne Valley South

The town of Ashbourne is the only place of major insurrection outside of Dublin during the 1916 rising and a monument, similar to a ship's bow, honours the nationalists that were killed there. In the south west the new Royal Canal Greenway, Ireland's longest greenway, passes along by Enfield, Longwood and The Hill of Down.

#### Other historic sites of interest in the area

Dunshaughlin, Clonard, Enfield and Ratoath - whose street plan follows the curve formed by the characteristic Norman Motte. Dunboyne Castle is an 18th century mansion which replaced the original castle as the seat of the Butlers, Lords of Dunboyne, and is now a hotel.

#### What else...

Emerald Park, one of Ireland's top tourist attractions is situated outside of the town of Ashbourne in the south of the Boyne Valley. In 2015 Emerald opened 'Cú Chulainn' Ireland's first rollercoaster and Europe's largest wooden rollercoaster with an inversion, and in 2017 it opened its Viking Voyage at the park. Stay in the Aisling Guesthouse and enjoy the flavours of Ashbourne and its hinterland just 15 minutes from Dublin. Visit Ashbourne Baseball Club or the Newbarn Farm Shop for some goodies..

Mornington Beach



Kells Courthouse



Loughcrew, Oldcastle



# Boyne Valley Towns & Villages

- |             |              |              |
|-------------|--------------|--------------|
| Ardee       | Drumcondrath | Mornington   |
| Ashbourne   | Dunleer      | Moynalty     |
| Athboy      | Duleek       | Navan        |
| Baltray     | Dunboyne     | Nobber       |
| Bellewstown | Dunshaughlin | Oldcastle    |
| Ballivor    | Enfield      | Rathcairn    |
| Bettystown  | Gormanston   | Ratoath      |
| Clogherhead | Julianstown  | Slane        |
| Clonard     | Kells        | Summerhill   |
| Clonee      | Kilcock      | Tallenstown  |
| Collon      | Kilmessan    | Termonfeckin |
| Donore      | Laytown      | Trim         |
| Drogheda    | Longwood     |              |



# Itineraries

Suggested routes to enjoy your time in the Boyne Valley

For more details and downloadable maps see [discoverboynevalley.ie](http://discoverboynevalley.ie)

## Discover memorable experiences in the Boyne Valley - 3 days

Renowned for the quantity and quality of its heritage visitor attractions and for its natural beauty, the Boyne Valley represents the best of Ireland's historical and contemporary culture. Starting in Drogheda, this itinerary takes you to some wonderful historical sites with lots of activities, family fun and plenty of good quality eating options thrown in. Follow up with a visit to some of the best heritage sites in the country. To top it all, there are some great adventure activities for all ages to enjoy. Great memories are made of this!



Slane Castle



Loughcrew Gardens and Lightscape

## Discover family fun in the Boyne Valley - 2 / 3 days

Indulge your passion for myths and legends with kings, knights and warriors with visits to ancient sites and medieval castles with hands-on experiences. Get active with kayaking, rafting, canoeing, zip-lining, karting and thrill-seeking rides. For smaller members there is a fairy trail, exotic zoo and lots more to discover. Definitely need 3 days for this action packed adventure!



- 1. KEY**
1. Brú na Bóinne
  2. Boyne Boats
  3. Battle of the Boyne Visitor Centre
  4. Irish Military War Museum
  5. Tynan Castle
  6. Navan Adventure Centre
  7. The Zone
  8. Boyne Valley Activities
  9. Emerald Park
  10. Funtasia, Drogheda
  11. WhiteRiver Karting
  12. Battleground Lightbox
  13. Loughcrew Gardens Fairy Trail

Navan Adventure Centre



Funtasia



The Zone Activity Centre

## Discover the flavour of the Boyne Valley - 2 days

The Boyne Valley, enjoys a reputation as one of the leading food-tourism destinations in Ireland today and there is no better place to enjoy the very best of Ireland's culinary culture. With passionate farmers, skilled food and drinks producers, along with world-class chefs and eateries, this tour will bring you directly to the farms, producers and distilleries and restaurants to savour the flavours of the Boyne Valley



Slane Food Circle



Listoke Gin School



Lismullen Cookery School

## Discover arts and culture in the Boyne Valley - 2 days

With five millennia of cultural and archaeological wonders to explore, you will find a wide range of engaging museums, galleries and historical sites, along with the very best in live performance and dining experiences.



Droihead Arts Centre



Solstice Arts Centre



Slane Castle

## Discover ecotourism in the Boyne Valley - 1 day

Where better to enjoy the beauty of Ireland's natural landscape than in the beautiful Boyne Valley. The River Boyne is surrounded by rich woodland habitats and is home to a wide variety of protected wildlife species, all ready to be explored on our many tracks and trails and nature walks.



Sonairte



Beehive Garden Walk



Girley Bog

## Other itineraries include...

### Rediscover golf in the Boyne Valley

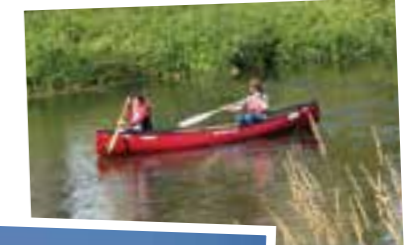
The Boyne Valley is home to some of the finest golf courses in all of Ireland. From challenging parklands to coastal links, golfers of all ages and standards will find a course to suit their game.



Golfing

### Rediscover the great outdoors

The Boyne Valley is an ideal escape for those who love to spend time outdoors. Encompassing some of the most unique landscapes in Ireland, the region offers a wealth of gardens, walks, beaches, hills and waterways to be explored and savoured.



Laytown beach

Canoeing on the River Boyne

### Rediscover well-being in the Boyne Valley

For peace of mind, the Boyne Valley has it all. Take the opportunity to relax while enjoying the landscape, heritage and culture of this unique area.



Royal Canal Greenway

### Memorable Experiences in Boyne Valley South

The bustling village of Dunboyne is a lively place with fabulous boutiques and other retailers in abundance, close to attractions including Emerald Park and the Royal Canal Greenway.



Drogheda

### Memorable Experiences in Drogheda

Drogheda, Gateway to the Boyne Valley, is one of the oldest towns in Ireland and evidence of its heritage can be found at every turn, as well as a buzzing modern arts scene.



St Colmcille's House, Kells

### Memorable Experiences in Kells

The Boyne Valley is famous for heritage. This is certainly true of the town of Kells with its monastic sites and connections to the renowned Book of Kells, one of early Christian Ireland's greatest treasures. The town hosts many festivals and events including the Hinterland Literary Festival and the Samhain Food Festival. There is plenty to see and do nearby, including the Loughcrew Cairns, Girley Big and Causey Farm.



Sheep Gate, Trim

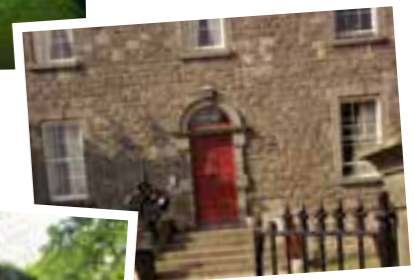
### Memorable Experiences in Trim

The beautiful, heritage town of Trim is centred around its impressive medieval castle. With beautiful walks and so much green space to enjoy, you won't be disappointed.



### Memorable Experiences in Slane

Close to Brú na Bóinne and is within easy reach of both Navan and Drogheda, Slane village itself offers hidden gems to discover in its arty-quarter, as well as the beautiful setting of Slane Castle and Slane Distillery.



Slane Village

### Memorable Experiences in Navan

Navan's central location makes it an ideal hub from which to explore the Boyne Valley. The town offers a variety of quality accommodation, restaurants and bars, and there are a selection of walks to enjoy in the urban centre and stretching out to the countryside beyond.



Ramparts, Navan

# Foodie destination

## Discover the flavours of Boyne Valley

Make time this year to discover the flavours of Boyne Valley, a unique gastronomic region and winner at the World Food Travel Association's Food Trekking Awards 2019 for a Food Destination and recognised by the National Geographic Traveller UK in 2019 as one of the World's Best Food Destinations.



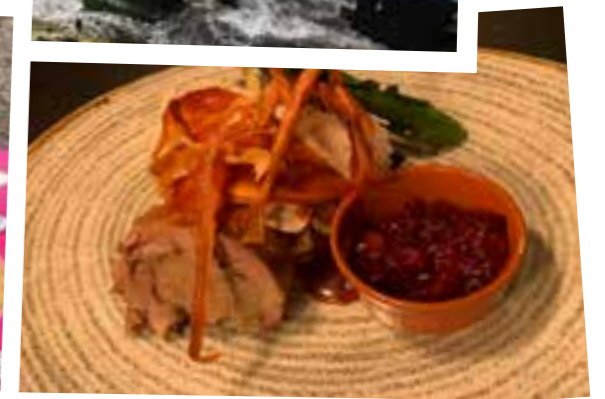
The fertile soils of the ancient Boyne Valley have been home to skilled farmers and food producers for thousands of years and the traditions have been passed down and continued to this day. The region boasts a bountiful supply of innovative farmers, food and drinks producers, chefs and eateries whose passion is to bring the flavours of our landscape to your table. As the birthplace of Ireland's Ancient East and once the seat of the High Kings of Ireland, the Boyne Valley still brings royal food and drinks experiences fit for any King or Queen.

Discover and immerse yourself in the traditions of the ancient Boyne Valley, one of the leading food tourism destinations in the world where there are so many delicious adventures to be explored. Immerse yourself in many authentic food experiences on offer across the region including Farm Tours where you will meet the producer, learn how their produce is grown or created and of course tasting the end result.

Go back to school at Listoke Distillery Gin School; get a tour of their distillery, enjoy a hands-on experience learning how to make gin and at the end of the day you get to take a bottle of your very own gin creation home with you. Brush up on your cooking skills, at one of the many cookery schools or if whiskey is your thing don't miss the Slane Whiskey Distillery Experience. Meet the producers at one of the many Farmer's Markets that take place and sample the freshest of produce.

The Boyne Valley Food Series also takes place throughout the year and features many unique culinary events including long table suppers, festivals, foraging walks and more. The highlight of the Boyne Valley Food Series is the Samhain Food Festival which takes place in November and celebrates 5,000 years of Irish food and culture. A weekend long celebration featuring some of Ireland's most prolific culinary names, with many different events including long table suppers, cookery demonstrations, farm tours, foraging walks, children's workshops, panel discussions and so much more.

All of this and so much more is just waiting for you to discover when you visit the Boyne Valley. Keep up to date with all our latest news & events at [BoyneValleyFlavours.ie](http://BoyneValleyFlavours.ie) or find us on social media @BoyneValleyFlavours.





# Soul food

## Eating out in the Boyne Valley

### Restaurants

#### The Bective

A relaxed, atmospheric restaurant in Kells specialising in Irish beef and fish with over 90% of food sourced within the Boyne Valley. An elegant but cosy vintage interior and outdoor seated terrace. Open times and special offers online. A sister restaurant to The Central Bar, Restaurant & Cafe in Navan. [thebective.ie](http://thebective.ie)

Bective Square, Kells, Co. Meath  
Tel +353 (0) 46 924 7780  
E [laura@thebective.ie](mailto:laura@thebective.ie)

#### Bective Tea Rooms

A beautiful and modern café with immaculate gardens and eye-catching surroundings. Sit back and relax with a hot drink, try some freshly baked confectionary or a full breakfast or light brunch. All food is sourced locally and freshly prepared by our in-house chefs. Customers can enjoy our woodland walks too. [bectivestud.com](http://bectivestud.com)

North Gate Lodge, Bective Stud, Balgil, Navan, Co. Meath, C15 DFC8  
Tel +353 (0) 46 902 2362  
E [info@bectivestud.com](mailto:info@bectivestud.com)

#### Bistro 61 at the Hamlet Court Hotel

The family-run Hamlet Court Hotel has a strong tradition of warm hospitality and great food. With stunning contemporary décor, Bistro 61 is great for all family occasions and once again the personal touches and quality food will make your special moments a life-long memory. [thehamlet.ie](http://thehamlet.ie)

Hamlet Court Hotel, Johnstown Bridge, Enfield, Co Meath  
Tel +353 (0) 46 954 1200  
E [info@thehamlet.ie](mailto:info@thehamlet.ie)

#### Brabazon Restaurant at Tankardstown House

Set in the 'Garden Village' at Tankardstown, the award winning Brabazon Restaurant offers seasonal dishes created from local produce, and vegetables, salads and herbs from their own kitchen garden. Serving Lunch and evening Dinner, choose from set menus or extensive Tasting Menus, for a dining experience that will satisfy both the eyes and the palette. [tankardstown.ie](http://tankardstown.ie)

Tankardstown House, Slane, Co. Meath  
Tel +353 (0) 41 98 24621  
E [info@tankardstown.ie](mailto:info@tankardstown.ie)

#### Bridge Restaurant at the Newgrange Hotel

The Bridge Restaurant, with its charming atmosphere and luxurious surroundings, combined with an imaginative menu, which consists of Irish cuisine together with international dishes and an extensive wine list sets the perfect venue for your evening. [newgrangehotel.ie](http://newgrangehotel.ie)

The Newgrange Hotel, Bridge Street, Co. Meath  
Tel +353 (0) 46 907 4100  
E [info@newgrangehotel.ie](mailto:info@newgrangehotel.ie)

#### Brogans of Trim

In the heart of the heritage town of Trim, Brogans Bar and Grill offers fresh, home-cooked lunches and dinners. Check out their colourful courtyard area and enjoy the warm hospitality. Extended function and music spaces are also available. [brogans.ie](http://brogans.ie)

High St, Trim, Co.Meath  
Tel +353 (0) 46 943 1237  
E [brogansoftrim@gmail.com](mailto:brogansoftrim@gmail.com)

#### The Conservatory Restaurant at the Castle Arch Hotel

The recently-refurbished Conservatory is the perfect place to enjoy a flavourful menu of contemporary dishes and fine wines. Serving both table d'hôte and a la carte menus, the Conservatory offers a wide range of choices, all prepared using the very freshest of local produce. [castlearchhotel.com](http://castlearchhotel.com)

The Castle Arch Hotel, Summerhill Rd, Trim, Co. Meath  
Tel +353 (0) 46 943 1516  
E [info@castlearchhotel.com](mailto:info@castlearchhotel.com)

#### Conyngham Arms Restaurant

The Conyngham Arms Restaurant offers high quality cuisine and menus with seasonal influence, using local produce wherever possible. The restaurant serves breakfast, lunch, and dinner, as well as traditional afternoon tea served in the cosy library. The restaurant has been awarded the AA Rosette Award for Culinary Excellence. [conynghamarms.ie](http://conynghamarms.ie)

Conyngham Arms Hotel, Slane, Co. Meath  
Tel +353 (0) 41 9884 444  
E [info@conynghamarms.ie](mailto:info@conynghamarms.ie)

#### The Darnley Restaurant

The Darnley Restaurant oozes warmth and character. Guests are welcome to enjoy the homely ambiance where visitors and locals mingle over tasty food and drink. A haven of secluded nooks, this space is ideal for quiet chats over delicious coffee or alternatively for enjoying a drink and some banter. [darnleylodgehotel.ie](http://darnleylodgehotel.ie)

Main Street, Athboy Co. Meath  
Tel +353 (0) 46 943 2283  
E [info@darnleylodgehotel.ie](mailto:info@darnleylodgehotel.ie)

#### The Donkey Shed

Located at Newbarn Farm, The Donkey Shed Restaurant is dedicated to local farmers and food producers. The restaurant serves delicious breakfasts, gourmet sandwiches, mouth-watering main courses and scrumptious desserts. We have a large patio area, perfect for al' fresco dining, and our restaurant is heated by two wood burning stoves. [newbarnfarm.ie](http://newbarnfarm.ie)

Newbarn Farm, Donaghmore, Ashbourne, Co. Meath  
Tel +353 (0) 1 8499 337  
E [info@newbarnfarm.ie](mailto:info@newbarnfarm.ie)

#### Franzinis

Franzinis, right beside the castle in the heart of Trim, provides great quality food and a wide range of wine choices. We love to create world cuisine dishes using the freshest local produce and for 20 years we have been providing the best food and service to our customers. Open Wednesday - Sunday. See social media for lunchtime opening hours. [franzinis.com](http://franzinis.com)

5 French's Lane, Trim, Co. Meath  
Tel +353 (0) 46 943 1002  
E [info@franzinis.com](mailto:info@franzinis.com)

#### Henrys at the Glenside

A brand new look to an old favourite. Henrys opened in August 2018 with a fresh new vintage style design and new menu. Good food served by good people. Open for dinner from 5pm Thurs-Sat and for Sunday lunch and evening dinner from 12.30pm to 8.30pm. You can book your table online [glensidehotel.ie/henrys.html](http://glensidehotel.ie/henrys.html)

Glenside Hotel, Dublin Rd, Drogheda, Co. Meath  
Tel +353 (0) 41 982 9999  
E [info@glensidehotel.ie](mailto:info@glensidehotel.ie)

#### Hugo's Restaurant at the Ardboyne Hotel

Hugo's Restaurant is designed with guests in mind, offering a great choice of menu in luxurious & stylish surroundings. Settle into the comfortable high back chairs while you peruse the menu options and enjoy our excellent cuisine. [ardboynehotel.com](http://ardboynehotel.com)

The Ardboyne Hotel, Dublin Road, Navan, Co. Meath  
Tel +353 (0) 46 902 3119  
E [info@ardboynehotel.com](mailto:info@ardboynehotel.com)

#### Il Forno

Il Forno is a charming restaurant in Drogheda that exudes a continental vibe. Open 7 days, serving breakfast, lunch and dinner. Specialising in wood-fired pizza, along with pasta dishes, world wines, cocktails and beers. Dine-out food and coffee service available. Always an elegant dining experience.

90 West Street, Drogheda, County Louth, A92WA09  
Tel +353 (0) 41 980 2100  
E [eventsatthegreygoose@gmail.com](mailto:eventsatthegreygoose@gmail.com)

#### The Ivy Restaurant at Dunboyne Castle Hotel

The Ivy Restaurant's menus have been developed with culinary awareness, balance and are constantly being updated with the latest innovations utilising the finest seasonal products. It is this culinary vision that drove the team to win the coveted 2 AA Rosettes from 2013 to date. [dunboynecastlehotel.com](http://dunboynecastlehotel.com)

Dunboyne Castle Hotel & Spa, Dunboyne, Co. Meath  
Tel +353 (0) 1 801 3500  
E [info@dunboynecastlehotel.com](mailto:info@dunboynecastlehotel.com)

#### Jules Restaurant at Trim Castle Hotel

Jules Restaurant combines traditional Irish cooking with a progressive Asian twist. We source many of our ingredients from the Boyne Valley, reaping the rewards of what our local land produces. Head Chef Sean McDonald has created an eclectic variety of dishes for our a la carte menu, at a moderate price. [trimcastlehotel.com](http://trimcastlehotel.com)

Trim Castle Hotel, Castle Street, Trim, Co. Meath  
Tel +353 (0) 46 948 3000  
E [info@trimcastlehotel.com](mailto:info@trimcastlehotel.com)

#### Khan Spices, Indian Restaurant & Take Away

Creating the flavour of real Indian cuisine in the same way as back home in India. Traditional Indian methods are used, with pungent spices and herbs, exotic and fragrant ingredients to offer subtle sensuality - the very essence of Indian cuisine. Proudly serving customers since 2008. [khanspicestrim.ie](http://khanspicestrim.ie)

Emmet St, Emmet Yard, Trim, Co. Meath  
Tel +353 (0) 46 943 1378  
E [info@khanspicestrim.ie](mailto:info@khanspicestrim.ie)

#### The Lloyd

A family friendly restaurant offering a high-quality extensive menu. With a full alcohol licence & waiter service, relax and enjoy a delicious meal in our state-of-the-art eco-friendly facility, Park Ri, which also boasts food outlets Kanoodle, Papa-John's Pizza & Supermacs. Opening hours and reservations online. [parkri.ie](http://parkri.ie)

Cavan Road, Kells, Co. Meath, A82 E7F3  
Tel +353 (0) 46 927 1124  
E [info@parkri.ie](mailto:info@parkri.ie)

#### Med Street Food

Located at the back of the Bounty Bar in Trim, with Trim Castle views, Med Street Food is housed in a converted horse box with a wood-fired oven. Here you can find the best of Mediterranean-style food, specialising in wood-fired sour-dough pizzas. Everything is homemade using the finest of ingredients.

Back of the Bounty Bar, Abbey Lane, Trim, Co Meath, C15 XD72  
Tel +353 (0) 89 983 8693  
E [MEDstreetfood2@gmail.com](mailto:MEDstreetfood2@gmail.com)

#### Monasterboice Inn

Family run restaurant close to Monasterboice and Newgrange, specialising in steak. Scampi is also a big hit. Good whole-some local food of the highest quality, in a warm and welcoming atmosphere. Can cater for any group, with 3 dining rooms varying sizes. [monasterboice-inn.ie](http://monasterboice-inn.ie)

Monasterboice, Co. Louth  
Tel +353 (0) 41 983 7383  
E [reservations@donegans.net](mailto:reservations@donegans.net)

#### Preston's Restaurant at Bellinter House Hotel

Preston's Restaurant at Bellinter House Hotel is recognised for its exceptionally high standards in culinary excellence by the AA Rosette Scheme. The menus provided in Preston's are seasonally based and produce is sourced locally wherever possible. Private dining options available. [bellinterhouse.com](http://bellinterhouse.com)

Bellinter House, Navan, Co.Meath  
Tel +353 (0) 46 903 0900  
E [reservations@bellinterhouse.com](mailto:reservations@bellinterhouse.com)

#### Rococo Restaurant at Knightsbrook Hotel & Golf Resort

A true fusion of Irish and international cuisine promise a delightful experience at the Rococo Restaurant. Menus are regularly updated to feature seasonal dishes and fresh ingredients and offer guests everything from Irish cheese platters to salmon and sirloin steak. [knightsbrook.com](http://knightsbrook.com)

Knightsbrook Hotel, Dublin Road, Trim, Co. Meath  
Tel +353 (0) 46 948 2100  
E [info@knightsbrook.com](mailto:info@knightsbrook.com)

#### Sage & Stone

Cafe/Restaurant serving breakfast lunch and afternoon tea. Using the finest local ingredients, all food and cakes are home made on the premises. Small gift shop also, selling quirky gifts and jewellery. [sageandstone.com](http://sageandstone.com)

The Farm, Newlanes, Duleek, Co. Meath  
Tel +353 (0) 41 981 4362  
E [info@sageandstone.com](mailto:info@sageandstone.com)

#### Scholars Townhouse Gastro Lounge & Restaurant

Champions of modern Irish cuisine utilising the Boyne Valley's world-class produce, Scholars has the best of both worlds, casual and fine dining (try the home-made afternoon tea) with a warm authentic approach in customer service. 2 AA Rosettes 19/20, Best Hotel Restaurant 2019. Open 7 days per week 7am until late. Booking essential. [scholarshotel.com](http://scholarshotel.com)

King St, Drogheda, Co. Louth, A92 ED71  
Tel +353 (0) 41 983 5410  
E [info@scholarshotel.com](mailto:info@scholarshotel.com)

#### The Signal Restaurant

Voted Best Hotel Restaurant Ireland by the Food Awards Group 2017, and recommended by top food critics in Ireland Lucinda O'Sullivan and Georgina Campbell. Emphasis on serving the freshest of ingredients, sourced locally. Must tries include the Station House Smokies, Kilmessan rack of lamb and their home-made brown bread ice-cream. [stationhousehotel.ie](http://stationhousehotel.ie)

Kilmessan, Co. Meath  
Tel +353 (0) 46 902 5239  
E [info@stationhousehotel.ie](mailto:info@stationhousehotel.ie)





### The Snailbox

The Snailbox is a family run business in the heart of County Meath. Known for its outstanding food and service with the most amazing views of the surrounding countryside. Come and visit the largest baseball hat collection in the world. Let our family look after your family. [snailbox.ie](http://snailbox.ie)

Kilmoon, Ashbourne, Co. Meath, A84YK35  
**Tel** +353 (0) 1 835 4277  
**E** [info@snailbox.ie](mailto:info@snailbox.ie)

### Stockhouse Restaurant

Welcome to StockHouse Restaurant, in the shadow of the magnificent Trim Castle. Born out of an avid love of great food we are all about Trim and producing consistently great food! We aim to provide our customers with a memorable night out - great food, good craic in relaxed comfortable surroundings. [stockhouserestaurant.ie](http://stockhouserestaurant.ie)

1 Emmet Hse, Finnegans Way, Trim, Co Meath  
**Tel** +353 (0) 46 943 7388  
**E** [justask@stockhouserestaurant.ie](mailto:justask@stockhouserestaurant.ie)

### Tara Lounge at CityNorth Hotel

Our stylish Tara Lounge serves seasonal food using quality local produce. Open daily from 12-9pm, 7 days per week. Carvery is also available on Sundays. Bookings are recommended. [citynorthhotel.com](http://citynorthhotel.com)

CityNorth Hotel, Gormanston, Co. Meath  
**Tel** +353 (0) 1 690 6666  
**E** [info@citynorthhotel.com](mailto:info@citynorthhotel.com)

### Vanilla Pod Restaurant at the Headfort Arms

Although under the umbrella of the Headfort Arms, The Vanilla Pod is a self-contained contemporary restaurant that has earned regional and national acclaim in its 10 plus years of operation. We pride ourselves on good quality, carefully sourced produce from local suppliers, using ingredients that are in season with specialties such as locally reared lamb. [headfortarms.ie](http://headfortarms.ie)

Headford Arms Hotel, Kells, Co. Meath  
**Tel** +353 (0) 46 924 0063  
**E** [info@headfortarms.ie](mailto:info@headfortarms.ie)

### 79 West Street

79 West Street is located in the heart of Drogheda and offers both indoor and other venues, all with their own unique style. Recently voted one of the top 200 restaurants, we are known for specialised cocktails, the perfect pint of Guinness and amazing food options. [79weststreet.ie](http://79weststreet.ie)

79 West Street, Drogheda, Co. Louth  
**Tel** +353 (0) 41 987 3896  
**E** [79weststreet@gmail.com](mailto:79weststreet@gmail.com)

### Zucchini's Restaurant

Award-winning restaurant & cocktail bar on the edge of Navan. Casual dining food with a modern twist, using local produce & seasonal ingredients. Expect great food, modern stylish surroundings, wines from around the world and our own signature cocktails, value for money and service with a smile! [zuchinisinnavan.ie](http://zuchinisinnavan.ie)

18-20 Blackcastle SC, Slane Rd, Navan Co Meath, C15 YRT9  
**Tel** +353 (0) 46 906 0459  
**E** [zuchinisinnavan@gmail.com](mailto:zuchinisinnavan@gmail.com)

## Cafés

### Bective Tea Rooms

A beautiful and modern café with immaculate gardens and eye-catching surroundings. Sit back and relax with a hot drink, try some freshly baked confectionery or a full breakfast or light brunch. All food is sourced locally and freshly prepared by our in-house chefs. Customers can enjoy our woodland walks too. [bectivestud.com](http://bectivestud.com)

North Gate Lodge, Bective Stud, Balgil, Navan, Co. Meath, C15 DFC8  
**Tel** +353 (0) 46 902 2362  
**E** [info@bectivestud.com](mailto:info@bectivestud.com)

### Brambles at Brú na Bóinne Visitor Centre

We are an Irish family business, proud of our artisan hand-produced food. Join us for breakfast, morning coffee or lunch. Our cafe is located in the visitor centre of Brú na Bóinne, where its glazed wall brings the outside in. Enjoy a light lunch or a coffee in a bright airy space. [brambles.ie](http://brambles.ie)

Brú na Bóinne Visitor Centre, Staleen Rd, Donore, Co. Meath  
**Tel** +353 (0) 41 981 4888  
**E** [customercare@brambles.ie](mailto:customercare@brambles.ie)

### Brambles at Oldbridge House, Battle of the Boyne Visitor Centre

We are an Irish family business, proud of our artisan hand-produced food. Join us for breakfast, morning coffee and lunch or afternoon teas in the beautiful Tea Pavilion at Oldbridge House, with views of the wonderful gardens. We offer baked goods and sandwiches alongside our award-winning coffee. Dine in or enjoy the grounds of Oldbridge estate. [brambles.ie](http://brambles.ie)

Battle of the Boyne Visitor Centre, Oldbridge, Co. Meath  
**Tel** +353 (0) 41 984 2921  
**E** [customercare@brambles.ie](mailto:customercare@brambles.ie)

### Coffee Spot

Located in Park Ri, which also houses Kells Kitchen Deli & The Cook of Kells Carvery, Coffee Spot is the perfect place to relax. Enjoy Barista coffee, gourmet sandwiches & delicious sweet treats, made fresh every day in our in-house bakery. The perfect spot to relax on your Boyne Valley adventure. [parkri.ie/eat-here/coffee-spot](http://parkri.ie/eat-here/coffee-spot)

Cavan Road, Kells, Co. Meath, A82 E7F3  
**Tel** +353 (0) 46 927 1123  
**E** [info@parkri.ie](mailto:info@parkri.ie)

### Coffee Works

Coffee Works is a family-owned speciality coffee shop serving coffee from Groundwork Coffee as well as treats and a selection of Irish products. [coffeeworks.ie](http://coffeeworks.ie)

Emmet Street, Trim, Co Meath  
**Tel** +353 (0) 085 213 8037  
**E** [coffeeworks.ie@gmail.com](mailto:coffeeworks.ie@gmail.com)

### Eureka House

Eureka House is the perfect location to unwind and relax. Located within lush parklands, our unique spot in the heart of the heritage town of Kells, County Meath offers a delicious range of breakfasts, lunches, cakes, bakes and treats with tasty teas and luxury barista style coffees. [eurekahousekells.business.site](http://eurekahousekells.business.site)

Eureka House, Navan Road, Co. Meath, A82 DX47  
**Tel** +353 (0) 46 924 0499  
**E** [eurekahousekells@gmail.com](mailto:eurekahousekells@gmail.com)

### The Greenways Cafe

In the heart of the village of Nobber and only one minute from the Boyne Valley to Lakelands County Greenway. Serving breakfast, lunch and tasty treats, with speciality coffee and artisan local food produce. Open daily.

Main Street, Nobber, Co. Meath  
**Tel** +353 (0) 87 224 2437  
**E** [thegreenwaycafenobber@gmail.com](mailto:thegreenwaycafenobber@gmail.com)

### Harvest Home Bakery & Café

In the heart of Trim offering freshly baked goods from 9.00am. Homemade soup, soda bread, toasted panini and salad plates. Fresh cream cakes and Bewleys coffee. Outdoor seating available. Like us on facebook and twitter. Cafe/Bistro of the Year at the Creativeoceanic.blogspot.ie food awards.

18 Market St, Trim, Co. Meath  
**Tel** +353 (0) 46 943 6660  
**E** [harvesthomebakery@gmail.com](mailto:harvesthomebakery@gmail.com)

### Loughcrew Estate Coffee Shop

Situated in peaceful, historic gardens, this is the perfect place to relax and unwind away from the hustle and bustle. Serving delicious coffee and food, Loughcrew's Lime Tree Cafe is open 7 days a week from 11am - 5pm. See social media for seasonal updates. [loughcrew.com](http://loughcrew.com)

Loughcrew, Oldcastle, Co. Meath  
**Tel** +353 (0) 49 854 1356  
**E** [info@loughcrew.com](mailto:info@loughcrew.com)

### Maguires Cafe Hill of Tara

If a walk on the famous hill has worked up an appetite, Maguires Cafe can help restore you. Relax in the warm, cosy atmosphere and allow our friendly staff to cater to your needs. The beautiful traditional Irish homemade food and selection of local craft beers will leave you talking for years to come. Open daily, see our gift shop too. [hilloftara.com](http://hilloftara.com)

Hill of Tara, Co. Meath  
**Tel** +353 (0) 46 902 5534  
**E** [info@hilloftara.com](mailto:info@hilloftara.com)

### PlatterByLu

A unique experience in the heart of Trim, PlatterByLu envelops all your senses. Café, artisan pantry and cheesemonger, offering brunch, catering and platterboxes and hampers. Dine-in and takeaway with a French influence, outdoor seating and dog friendly. Mobile unit available for events. [platterbylu.ie](http://platterbylu.ie)

Athboy Gate, Trim, Co. Meath, C15 TV0F  
**Tel** +353 (0) 46 943 7444  
**E** [hello@platterbylu.ie](mailto:hello@platterbylu.ie)

### Scullery N°4

Scullery N°4 is located in the heart of Kells providing fresh homemade food sourced from as many local suppliers as we can find. Relax inside or outside in our garden and when the weather permits enjoy tasty dishes from our BBQ and grills with either a fresh juice or a cold stronger beverage. [sculleryn4.com](http://sculleryn4.com)

Bective Street, Kells, Co Meath, A82 NR76  
**Tel** +353 (0) 46 924 1884  
**E** [sculleryn4@gmail.com](mailto:sculleryn4@gmail.com)

### Sonairte Cafe

The Sonairte Café offers a delicious range of vegetarian and vegan meals and treats in the beautiful surrounds of Sonairte Eco Centre and Gardens. Our food is good for people and the planet and where possible uses certified organic seasonal vegetables and fruit grown in the Sonairte garden. [sonairte.ie](http://sonairte.ie)

The Ninch, Laytown, Co. Meath, A92 D9XH  
**Tel** +353 (0) 41 982 7572  
**E** [hello@sonairte.ie](mailto:hello@sonairte.ie)

## Gastro Pubs

### Balreask Bar, Restaurant & Guest Accommodation

Balreask Bar & Restaurant is a family run bar, restaurant, guest accommodation and function venue. We provide a wide range of dining options including Breakfast, our renowned Carvery Lunch, and A La Carte including a three-course set menu. [balreask.ie](http://balreask.ie)

Balreask Cross, Trim Road, Navan, Co. Meath  
**Tel** +353 (0) 46 907 8248  
**E** [info@balreask.ie](mailto:info@balreask.ie)

### The Central

Award winning bar (National Bar of the Year, Best Modern Cooking in a Bar, Best Gastro Pub in Meath). A multi-purpose venue with 7 bars, a heated rooftop terrace, outdoor areas, live music, comedy gigs and New York style open kitchen restaurant. Great food & service. 90% of produce is local. [thecentral.ie](http://thecentral.ie)

4 Trimgate Street, Navan, Co. Meath  
**Tel** +353 (0) 46 902 7999  
**E** [everything@thecentral.ie](mailto:everything@thecentral.ie)

### Coburns Bar

Old world bar that still houses original 1900s features, forming the on-street presence of The Lawrence Hotel. There's a selection of beer, spirits, worldwide wines, cocktails, unique coffees, teas, small gourmet treats and a pint of Arthur which can be drunk on a counter that has stood the test of time.

Main Street, Athboy, Co. Meath, C15 N6YD  
**Tel** +353 (0) 46 948 7001  
**E** [info@thelawrence.ie](mailto:info@thelawrence.ie)

### The Glyde Inn

The Glyde Inn, located in the picturesque coastal village of Annagassan, was awarded National Pub of The Year and Irish Food Pub of the Year 2018 at the Irish Pub Awards. A traditional Irish gastro pub dating back to 1770, its Sea View Restaurant specialises in local seafood. Regular live music events. [theglydeinn.ie](http://theglydeinn.ie)

Annagassan, Castlebellingham, Co. Louth  
**Tel** +353 (0) 42 937 2350  
**E** [info@theglydeinn.ie](mailto:info@theglydeinn.ie)

### Jack's Bar and Restaurant

Jack's Bar, Restaurant and Garden is a chic Gastrobar in Kells, Co Meath. Specialising in great food, drinks, cocktails and craic. Renowned for its weekly Thursday trad session! [facebook.com/jacksbarandgarden](https://www.facebook.com/jacksbarandgarden)

Rockfield Road, Kells, Co Meath  
**Tel** +353 (0) 46 924 1973  
**E** [jacksbarandgarden@gmail.com](mailto:jacksbarandgarden@gmail.com)

### Jack Quinn's Bar

Situated 3km from the heritage town of Trim, it is one of the oldest pubs in Meath, dating back to the 1800s. Jack's is known for its pints of Guinness, Irish coffees and roaring open fire. Come join the friendly locals for drinks and fresh pub food, topped off with our famous traditional Irish music sessions.

Scurlogstown, Trim, Co. Meath, C15 D284  
**Tel** +353 (0) 46 948 4779  
**E** [ann.quinn5@gmail.com](mailto:ann.quinn5@gmail.com)

### Nelly's Bar

Located in the heart of Drogheda, Rest your feet and raise your glass at Nellys! Come check us out; live music, great DJs, the best cocktails & delicious food...see you there. [themarcy.ie](http://themarcy.ie)

The Marcy Hotel, West Street, Drogheda, Co. Louth  
**Tel** +353 (0) 41 981 0196  
**E** [nellys@themarcy.ie](mailto:nellys@themarcy.ie)

### The Lime Kiln

Discover the culinary delights of the Boyne Valley at the award winning Lime Kiln Gastropub. We offer an exciting and creative menu for food lovers with an emphasis on fresh local ingredients. Our passion for great food, warm atmosphere and friendly staff will ensure your visit to be a memorable one. [thelimekiln.ie](http://thelimekiln.ie)

Main Street, Julianstown, Co. Meath  
**Tel** +353 (0) 41 982 9001  
**E** [info@thelimekiln.ie](mailto:info@thelimekiln.ie)

### Peter's Pub

Family owned pub since 1997, with great food, beers, spirits and amazing cocktails and a wow outdoor area! Fully refurbished first floor venue catering for up to 280 people for every event. [petersdunshaughlin.ie/](http://petersdunshaughlin.ie/)

Dunshaughlin, Co. Meath  
**Tel** +353 (0) 1 825 9161 / (0) 87 339 6695  
**E** [peterspub@live.ie](mailto:peterspub@live.ie)

### Sally Rogers Bar

In the heart of Trim, Sally's is the perfect spot to enjoy a delicious coffee, lunch or pint on the riverside balcony. This traditional Irish pub has a welcoming atmosphere, live music Friday- Monday and is dog-friendly!

Bridge Street, Trim, Co. Meath, C15 XKTS  
**Tel** +353 (0) 46 948 3510  
**E** [sallyrogerstrim@gmail.com](mailto:sallyrogerstrim@gmail.com)

## Pubs and Bars

### Clarkes Bar Drogheda

Clarkes Bar situated in the town centre of Drogheda is a unique pub dating back to 1900. Today the unique features of the interior are still in place along with some wonderful characters who frequent on a daily basis. The pint of Guinness is the main tittle and is said to be the best pint in town. Well worth a visit! [clarkesofdrogheda.com](http://clarkesofdrogheda.com)

Clarkes Bar, No 19 Peter Street, Drogheda, Co. Louth  
Tel +353 (0) 41 983 6724

### Donegan's Pub

A traditional Irish whiskey pub. Donegan's of Collon opened its doors as a resting place for weary travellers in 1871. Stocking a variety of drinks (including over 100 Irish whiskeys) Donegan's is still the place to come whether you'd like to sit by one of the two open fires on a winter's day, or enjoy the summer sun in our comfortable yard. [doneganspub.com](http://doneganspub.com)

Ardee Street, Collon, Co. Louth  
Tel +353 (0) 41 982 6834  
E [admin@doneganspub.com](mailto:admin@doneganspub.com)

### Farrelly's Bar

A truly authentic family-run, traditional Irish pub. At Farrelly's we are famous for the quality of our pint of Guinness. As well as providing a traditional atmosphere we have a very pleasant outdoor area, a modern Wi-Fi network and live music every Saturday and Sunday. [farrellyspub.ie](http://farrellyspub.ie)

Church Street, Oldcastle, Co. Meath  
Tel +353 (0) 49 854 1136  
E [farrellyspuboldcastle@gmail.com](mailto:farrellyspuboldcastle@gmail.com)

### Fox's Castle Lounge

Family-run traditional pub located on picturesque hill of Skryne with lovely views of the countryside. A warm welcome and a great pint of Guinness awaits you. Well known for the great traditional music session every Wednesday night.

Skryne, Tara, Co. Meath, C15A25F  
Tel +353 (0) 86 396 9830

### James Griffin

One of the oldest pubs in Meath, since 1904. This pub was voted Traditional Pub of the year and Runner-Up 'Powers' Snug of the Year in 2012. There are many nooks and corners to this wonderful pub, where you can enjoy our craft beers, special whiskeys or your favourite cocktail beside the cosy log fires and watch the world go by. [jamesgriffinpub.ie](http://jamesgriffinpub.ie)

High Street, Trim, Co. Meath  
Tel +353 (0) 83 901 3168  
E [bookings.jamesgriffinpub@gmail.com](mailto:bookings.jamesgriffinpub@gmail.com)

### Kiely's Bar

Kiely's Bar is a family-run bar since 1921, and the best place in town to watch live sports or enjoy a creamy pint of Guinness. On the two hot days we get every summer, you can enjoy a refreshing pint in our Beer Garden!

Emmet Street, Trim, Co. Meath  
Tel +353 (0) 86 815 2874  
E [Johnkiely@hotmail.com](mailto:Johnkiely@hotmail.com)

### Lynch's Motor Bar

Lynch's - The Motor Bar, est. 1926 is a third-generation family-run pub. With several rooms within, there's always a quiet corner. Warm, friendly atmosphere focusing on the quality of our beers, plus a large selection of whiskeys and other spirits. All live sports covered daily, and a large sun-soaked beer garden.

Emmet Street, Trim, Co. Meath, C15 CX53  
Tel +353 (0) 46 943 7620  
E [lynchsmotorbar@gmail.com](mailto:lynchsmotorbar@gmail.com)

### Odd Mollies

Odd Mollies is an eclectic bar and music venue where you'll find a warm and sociable atmosphere within our doors. We are dedicated to providing top quality live music and entertainment, whether it's in our intimate venue or on the stage in our large open beer garden area. Cocktails, fine wines, real music. [oddmollies.ie](http://oddmollies.ie)

19 Peter Street, Drogheda, Co. Louth  
Tel +353 (0) 41 983 6724  
E [oddmolliesdrogheda@gmail.com](mailto:oddmolliesdrogheda@gmail.com)

### The Punt Pub

Family run traditional pub, with live music. Full sports coverage daily. Function room available for private parties.

51 Fair Street, Drogheda, Co. Louth  
Tel +353 (0) 41 984 7868  
E [thepuntpub@gmail.com](mailto:thepuntpub@gmail.com)

### The Royal Meath

The Royal Meath is one of the oldest bars in Navan, owned by the Geraghty family since the 1960's. Enjoy a quiet drink in a cosy corner, or the buzz of vibrant, open plan seating areas whilst watching live sport or music. Food served 7 nights a week from their delicious pizza and antipasti menu. [royalmeathbar.ie](http://royalmeathbar.ie)

Watergate street, Navan, Co. Meath  
Tel +353 (0) 46 902 1366  
E [hello@royalmeathbar.ie](mailto:hello@royalmeathbar.ie)

### Tara Na Rí

Tara Na Ri, meaning Tara of the Kings, is located on the foothills of the world famous Hill of Tara with a comfortable lounge with a solid fuel stove and a lively bar. The old stone building has been meticulously maintained and is ideal for any occasion. [taranari.ie](http://taranari.ie)

Garlow Cross, Navan, Co. Meath  
Tel +353 (0) 46 902 1460  
E [info@taranari.ie](mailto:info@taranari.ie)

### TJ's Bar at the The Lime Kiln

Located in the heart of Julianstown village is The Lime Kiln Gastropub and TJ's Bar. A cosy and charming pub offering great food and a wide selection of craft beers and ciders. Our stylish surroundings and welcoming staff help to ensure a warm atmosphere for you and your family to relax in. [limekiln.ie](http://limekiln.ie)

Main Street, Julianstown, Co. Meath  
Tel +353 (0) 41 982 9001  
E [info@thelimekiln.ie](mailto:info@thelimekiln.ie)



Listoke Distillery

## Boyn Valley Craft Distilling, Brewing and Cider Making

### Boann Distillery

Family owned distillery producing a range of triple distilled Irish single malt and Irish pot still whiskey from three handmade bespoke copper pot stills. From "Grain to Glass" crafted within the distillery ensuring whiskey and gin of great character with a unique provenance and a real sense of place. Visitor experience opening soon. [boanndistillery.ie](http://boanndistillery.ie)

Lagavoren, Platin Road, Drogheda, Co Meath  
Tel +353 (0) 41 987 8078  
E [hello@boanndistillery.ie](mailto:hello@boanndistillery.ie)

### Dan Kelly's Cider

Our farm manager has seen four generations of the McNeece family work on this farm in Drogheda, and we have been growing apples for generations before that in County Armagh. We combine traditional techniques and our own hand-picked apples to create an award winning range of ciders, juice and vinegar. [dankellyscider.com](http://dankellyscider.com)

Stameen, Dublin Rd, Drogheda  
Tel +353 (0) 41 983 7333  
E [apples@dankellyscider.com](mailto:apples@dankellyscider.com)

### Fore Distillery

Fore Distillery is a craft distillery producing our own Golden Rum, White Rum, and Poitin entirely at our own distillery. Guided tours and tasting, and Barrel and Bean Cafe on site. Located close to Fore Abbey, the Nancie and Nellie Walk and only 15 minutes from Loughcrew Cairns. [foredistillery.ie](http://foredistillery.ie)

Moortown Fore, Castlepollard, Co. Westmeath, N91 TY06  
Tel +353 (0) 44 966 1775  
E [info@foredistillery.ie](mailto:info@foredistillery.ie)

### Listoke Distillery and Gin School

Now open for distillery tours as well as being the only gin school in Ireland, Listoke 1777 has become one of Ireland's most sought after visitor experiences. Visit the school for a history of gin, gin tasting and an introduction to all that is gin. Pre-booking essential. [listokedistillery.ie](http://listokedistillery.ie)

Tenure, Monasterboice, Co. Louth  
Tel +353 (0) 41 214 5044  
E [hello@listokedistillery.ie](mailto:hello@listokedistillery.ie)

### Slane Distillery

Allow our storytellers to draw you into our wonderful world of whiskey. The fabrics of the Conyngham family tapestry are carefully woven through an interactive tour of our state of the art working distillery. Finish the tour with a taste of our signature triple casked blend, Slane Irish Whiskey. Combine your tour with a visit to Slane Castle. See details on [slaneirishwhiskey.com](http://slaneirishwhiskey.com)

Slane Distillery, Slane, Co. Meath  
Tel +353 (0) 46 903 0600  
E [reservations@slanedisitillery.com](mailto:reservations@slanedisitillery.com)



Slane Distillery



Boann Distillery



Fore Distillery



# Stay a while

## Great accommodation in the Boyne Valley

From luxury four star hotels to cosy cottages and fabulous yurts for those looking for something a bit different, the range of accommodation in the Boyne Valley will certainly tempt you to stay longer...



## Hotels

### Ardboyne Hotel

Situated on the outskirts of Navan, this hotel is an ideal base for exploring the Boyne Valley. Carefully selected furnishings and a warm, welcoming atmosphere, alongside beautifully appointed rooms, provide the very best in creature comforts. Live music every Saturday night. 🍷 Hugo's Restaurant, The Kells Bar. [ardboynehotel.com](http://ardboynehotel.com)

Dublin Road, Navan, Co. Meath  
Tel +353 (0) 46 902 3119 / LoCall IRL 1890 43 42 41  
E [info@ardboynehotel.com](mailto:info@ardboynehotel.com)

### Bellinter House Hotel and Spa

A magnificent 18th century Georgian house, less than 5 minutes off the M3 and under 30 minutes from Dublin City centre and Dublin airport. With a full range of spa services, specialty experiences, and the finest award-winning cuisine in the area, your time in Bellinter House will be a truly unforgettable experience. 🍷 Preston's Restaurant. [bellinterhouse.com](http://bellinterhouse.com)

Navan, Co. Meath  
Tel +353 (0) 46 903 0900  
E [reservations@bellinterhouse.com](mailto:reservations@bellinterhouse.com)

### Castle Arch Hotel

Nestled in the picturesque heart of the heritage town of Trim, just 35 minutes from Dublin, the Castle Arch Hotel is a home from home with 21 excellently appointed ensuite bedrooms. Additional facilities include a private carpark, complimentary Wi-Fi, 🍷 the Arch Bar and Lounge with a beautiful new Gastro menu. [castlearchhotel.com](http://castlearchhotel.com)

Summerhill Road, Trim, Co. Meath  
Tel +353 (0) 46 943 1516 / LoCall IRL 1890 43 42 41  
E [info@castlearchhotel.com](mailto:info@castlearchhotel.com)

### City North Hotel & Conference Centre

Contemporary 4 star hotel combines high standards of hospitality and service, 128 stylish bedrooms, bar/restaurant, treatment room. Conveniently located close to the Meath coast and many family-friendly attractions. 15 minutes from Dublin Airport on M1, 25 minutes from Dublin city centre, direct coach link to Dublin City Centre from Hotel. Live music at weekends. 🍷 Mornington Restaurant, Tara Lounge. [citynorthhotel.com](http://citynorthhotel.com)

Gormanston Co. Meath  
Tel +353 (0) 1 690 6666  
E [info@citynorthhotel.com](mailto:info@citynorthhotel.com)

### The Conyngham Arms Hotel

This lovingly restored 18th century coaching inn, sits comfortably at the heart of Slane village and offers 15 individually decorated rooms and a wonderful welcome to visitors. Uncomplicated, fresh menus, offer locally produced fare in season. 40 minutes from Dublin. 🍷 The Conyngham Arms Restaurant. [conynghamarms.ie](http://conynghamarms.ie)

Main Street, Slane, Co Meath  
Tel +353 (0) 41 988 4444  
E [info@conynghamarms.ie](mailto:info@conynghamarms.ie)

### Darnley Lodge Hotel

Situated in the historic town of Athboy, the Darnley Lodge Hotel is a haven of tranquillity nestled in the heart of the Boyne Valley. Our hotel is an ideal place for you to relax and unwind with its homely charm and friendly feel, or savour our varied menus in the lounge bar or restaurant. 🍷 [darnleylodgehotel.ie](http://darnleylodgehotel.ie)

Main Street, Athboy Co. Meath  
Tel +353 (0) 46 943 2283  
E [info@darnleylodgehotel.ie](mailto:info@darnleylodgehotel.ie)

### Dunboyne Castle Hotel & Spa

This restored former home to the Lord of Dunboyne offers sophisticated modern luxury. Convenient to many family attractions, along with Dublin Airport and city centre, this hotel boasts magnificent gardens, large conference and banqueting facilities, and the exquisite Seoid Spa. 145 spacious bedrooms. 🍷 The Ivy, The Terrace Lounge, The Sadler Bar. [dunboynecastlehotel.com](http://dunboynecastlehotel.com)

Dunboyne, Co. Meath  
Tel +353 (0) 1 801 3500  
E [info@dunboynecastlehotel.com](mailto:info@dunboynecastlehotel.com)

### Glenside Hotel

Let our family look after yours in our beautifully appointed, family owned 17 bedroom hotel only 20 minutes from Dublin Airport. Ample free parking, delicious food, beautiful gardens and a traditional 'céad míle fáilte' which has been extended to guests for almost 50 years. 🍷 Henry's Restaurant, Bar food served daily. [glensidehotel.ie](http://glensidehotel.ie)

Dublin Road, Drogheda, Co. Meath  
Tel +353 (0) 41 982 9999  
E [info@glensidehotel.ie](mailto:info@glensidehotel.ie)

### Hamlet Court Hotel

With a tradition of hospitality, the Hamlet Court Hotel and O'Neill family are renowned for a warm welcome and personal service. The Hamlet Court Hotel boasts 30 superbly appointed guest bedrooms, award winning Bistro 61 Restaurant, Murty's Bar & Courtyard and private landscaped gardens. Nestled in the picturesque village of Johnstownbridge on the outskirts of Enfield The Hamlet Court is easily accessible, only 30 minutes from Dublin. 🍷 Murty's bar, Bistro 61 Restaurant [thehamlet.ie](http://thehamlet.ie)

Johnstownbridge, Enfield, Co. Meath, A83 WC04  
Tel +353 (0) 46 9541200  
E [info@thehamlet.ie](mailto:info@thehamlet.ie)

### Headfort Arms Hotel

Family owned & managed award winning hotel offers a true Irish experience in the heritage town of Kells. This listed building has 45 bespoke bedrooms with modern facilities. Enjoy the Headfort Spa, traditional pub and open fire. The hotel hosts a facsimile edition of the Book of Kells. Golf packages available. 🍷 Vanilla Pod Restaurant, Café Therese, The Keltic Bar. [headfortarms.ie](http://headfortarms.ie)

Kells, Co. Meath  
Tel +353 (0) 46 924 0063  
E [info@headfortarms.ie](mailto:info@headfortarms.ie)

### Knightsbrook Hotel, Spa & Golf Resort

A combination of luxury and modern sophistication, in this 4 star hotel set in 186 acres of rolling parkland, 131 bedrooms including 12 suites, health club, 17 suite Spa, championship golf course designed by the late Christy O'Connor Jnr, conference facilities for up to 1100 delegates and 28 luxurious holiday homes. 🍷 Rocco Restaurant, Swifts Bar, Terrace Lounge. [knightsbrook.com](http://knightsbrook.com)

Dublin Road, Trim, Co. Meath  
Tel +353 (0) 46 948 2100  
E [info@knightsbrook.com](mailto:info@knightsbrook.com)

### The Newgrange Hotel

Located in the centre of Navan Town and 2 min walk from the main bus stop. Private car parking. Just 30 minutes from Dublin. The hotel boasts 62 luxurious bedrooms. Additional facilities include complimentary wi-fi, live entertainment in Rowley's bar Friday - Sunday. 🍷 The Bridge Restaurant, Rowley's Pub and Bridge Brasserie serving food all day. [newgrangehotel.ie](http://newgrangehotel.ie)

Navan, Co. Meath  
Tel +353 (0) 46 907 4100 / LoCall IRL 1890 43 42 41  
E [info@newgrangehotel.ie](mailto:info@newgrangehotel.ie)

### Scholars Townhouse Hotel

Steeped in history, the magnificent Scholars Townhouse building is now a boutique hotel in the heart of Drogheda. Renowned for excellence in hospitality and customer service, the McGowan family have created a homely atmosphere with the warmest of Irish welcomes. 16 en-suite bedrooms and award-winning restaurant. 🍷 2 AA rosettes 2019-20, Best Hotel Restaurant County Louth 2019. [scholarshotel.com](http://scholarshotel.com)

King Street, Drogheda, Co. Louth  
Tel +353 (0) 41 983 5410  
E [info@scholarshotel.com](mailto:info@scholarshotel.com)




### The Station House Hotel

This award winning and newly-refurbished country house hotel, based on a converted railway junction built in 1862, has been run by the Slattery family for over 35 years. Relax in the Platform Bar & Piano Lounge, or dine in the award winning Signal Restaurant. Voted Best Hotel Restaurant Ireland by the Food Awards Group.  Signal Restaurant. [stationhousehotel.ie](http://stationhousehotel.ie)

Kilmessan, Co. Meath  
**Tel** +353 (0) 46 902 5239  
**E** [info@stationhousehotel.ie](mailto:info@stationhousehotel.ie)

### Trim Castle Hotel

Overlooking Trim Castle and the adjoining rolling lawns of St. Patricks Church, this contemporary 4 star hotel offers superb accommodation. Stunning rooftop garden, 68 bedrooms, conference facilities, cafe, bar, restaurant, ample parking, Kilkenny Gift Shop. Complimentary wifi.  Jules Restaurant, The Bailey Bar, Barista Café. [trimcastlehotel.com](http://trimcastlehotel.com)

Trim, Co. Meath  
**Tel** +353 (0) 46 948 3000  
**E** [info@trimcastlehotel.com](mailto:info@trimcastlehotel.com)

## Specialist Accommodation

### Boyne House Slane

Boyne House Slane is a former rectory dating from 1807, magnificently renewed, to offer luxury accommodation bearing exceptional levels of comfort and style. An addition to the Tankardstown and Conyngham Arms family in the area, Boyne House Slane comprising 10 bedrooms is perfect for visiting groups. [boynehouseslane.ie](http://boynehouseslane.ie)

Main Street, Slane Co. Meath  
**Tel** +353 (0) 41 988 4444  
**E** [info@boynehouseslane.ie](mailto:info@boynehouseslane.ie)

### Highfield House

Beautiful period residence overlooking Trim Castle and the River Boyne. 30 mins to Newgrange, 40 mins from Dublin Airport. Facilities include: laundry services, baby-sitting service, free Internet access. (Wifi) tea/coffee making facilities & flat screen TVs. A relaxing and memorable experience with a very warm welcome awaiting all. Large groups can be accommodated. [highfieldguesthouse.com](http://highfieldguesthouse.com)

Maudlins Road, Trim, Co. Meath, C15XP28  
**Tel** +353 (0) 86 857 7115 / 86 254 5318  
**E** [info@highfieldguesthouse.com](mailto:info@highfieldguesthouse.com)

### Loughcrew House

Private and exclusive accommodation in the centuries old Loughcrew Estate. Decorated with style by Emily Naper the house sleeps 17 with options for more in the courtyard apartments. Views of beautiful landscapes transport you back to a different time where you can imagine yourself as the lord of the Estate. [loughcrew.com](http://loughcrew.com)

Loughcrew, Oldcastle, Co. Meath  
**Tel** +353 (0) 49 854 1356  
**E** [info@loughcrew.com](mailto:info@loughcrew.com)

### Tankardstown House

Set on an 80 acre estate, Tankardstown House comprises an 18th century manor house for overnight guests and chic courtyard suites. Dine in the flagship Brabazon Restaurant. Parkland and walled pleasure gardens. Bus parking, tea/ coffee/ lunch available, child friendly, dogs allowed on leads. Viewing by appointment only. [tankardstown.ie](http://tankardstown.ie)

Rathkenny, Slane, Co. Meath  
**Tel** +353 (0) 41 982 4621  
**E** [info@tankardstown.ie](mailto:info@tankardstown.ie)

## Guesthouses

### Aisling Guesthouse

20 rooms sleep 60 people (inc large family rooms which can accommodate parties of 3,4 or 5) also 2/3 bed self-catering apartments, free Wifi in rooms and apts. 5 mins from M50. The bus stops outside our gate - 25 mins journey to Dublin City. We pride ourselves on our top class accommodation & service for over 30 years. [aislingguesthouse.ie](http://aislingguesthouse.ie)

Dublin Road, Baltrasna, Ashbourne  
**Tel** +353 (0)1 835 0359  
**E** [info@aislingguesthouse.ie](mailto:info@aislingguesthouse.ie)

### Tigh Cathain

Tudor style country house in a quiet environment. 1km from Trim Castle on the R160. 40 minutes to Dublin Airport. Large luxury en-suite rooms with tea and coffee facilities. Secure private parking and free WI-FI. Accommodation only. Breakfast is not served. [tighcathain-bnb.com](http://tighcathain-bnb.com)

Longwood Road, Trim, Co. Meath  
**Tel** +353 (0) 46 943 1996 / 086 257 7313  
**E** [tighcathain.bnb@gmail.com](mailto:tighcathain.bnb@gmail.com)

## B&Bs

### Balreask Bar, Restaurant & Guest Accommodation

Balreask Bar & Restaurant is a family run bar, restaurant, guest accommodation and function venue. Located on the outskirts of Navan, Balreask is the ideal location for the tourist and business visitor. [balreask.ie](http://balreask.ie)

Balreask Cross, Trim Road, Navan, Co. Meath  
**Tel** +353 (0) 46 907 8248  
**E** [info@balreask.ie](mailto:info@balreask.ie)

### Caravogue House B&B

A purposely built bed & breakfast property offering a warm Irish welcome, with the modern upscale feel of a hotel. Situated in Trim, Co Meath, centrally & conveniently located just two minutes walk from the town centre and the many heritage attractions the beautiful town of Trim has to offer. [caravoguehouse.ie](http://caravoguehouse.ie)

Navan Road, Trim, Co Meath, C15P2N8  
**Tel** +353 (0) 46 949 0499  
**E** [rooms@caravoguehouse.ie](mailto:rooms@caravoguehouse.ie)

### Teltown House

17th century country house on 290 acres in the heart of the Boyne Valley. Situated close to where the historical Tailteann Games were held. Accommodation for 8-10, all bedrooms en suite with 3 reception rooms, log fires and jacuzzi and a full Irish breakfast included. Short distance to all historic sites. [teltownhouse.net](http://teltownhouse.net)

Teltown, Navan, Co. Meath  
**Tel** +353 (0) 46 902 3239 / (0) 87 665 9022  
**E** [teltownhouse1@gmail.com](mailto:teltownhouse1@gmail.com)

### Tom Blake House

Housed in a 130-year-old historic house in the heritage town of Kells, Co. Meath in the heart of the Boyne Valley. Tom Blake House combines the warmth and hospitality of a B&B within the luxurious interiors of a boutique hotel. [tomblakehouse.ie](http://tomblakehouse.ie)

Bective Street, Kells, Co. Meath, A82 V3K0  
**Tel** +353 (0) 87 109 1252 / / 087 718 9507  
**E** [tomblakehouse@gmail.com](mailto:tomblakehouse@gmail.com)

### Woodstock Bed no Breakfast

Woodstock Bed no Breakfast is a comfortable base in County Meath. It has three double rooms, two with en-suite and one with a private bathroom. Breakfast isn't offered but there is a private guest sitting room with snacks provided and coffee making facilities. [woodstockbednobreakfast.ie](http://woodstockbednobreakfast.ie)

Woodstock, Old Road, Dunsany, Co. Meath  
**Tel** +353 (0) 86 852 0378  
**E** [audrey@woodstockbednobreakfast.ie](mailto:audrey@woodstockbednobreakfast.ie)



Dunboyne Castle Hotel and Spa

Hamlet Court Hotel

Bellinter House Hotel



### Woodview Lodge

A modern bungalow situated on a farm, with beautiful views of the open countryside. Just 3km from Trim and 40 minutes to Dublin Airport. There are 3 spacious en-suite bedrooms, a twin, king and triple. Free wifi, private parking and a continental breakfast available. Perfect for anyone looking for a quiet, relaxing stay. Find us on [booking.com](https://www.booking.com)

Adamstown, Trim, Co. Meath  
**Tel** +353 (0) 86 860 1337/ 87 601 9491  
**E** [woodviewlodge123@gmail.com](mailto:woodviewlodge123@gmail.com)

### The Yellow House B&B

Spacious detached house located beside the famous River Boyne on the R147. Two minutes walk from Ardboyne Hotel with full bar and restaurant facilities. Free wifi for guests. Short walk to town centre. Dublin Bus and Airport bus stop 2 mins. from B&B. Free parking. Home cooking a speciality. [theyellowhouse.ie](https://www.theyellowhouse.ie)

1 Springfield Glen, Dublin Road, Navan, Co. Meath  
**Tel** +353 (0) 46 907 3338  
**E** [info@theyellowhouse.ie](mailto:info@theyellowhouse.ie)

## Self Catering

### Bective Stud Apartments

Our self-catering apartments overlook the front garden and the courtyard within the Bective Estate. The apartments are newly refurbished, spacious, stylish and contemporary, with a fully equipped kitchen, separate bathroom and flat-screen TVs with complimentary Wi-Fi. Private entrance with dedicated secure parking. There is an onsite restaurant open Mon-Sat 9-5pm and over 4km of Woodland Walks. [bectivestud.com](https://www.bectivestud.com)

Bective Stud, Balgil, Navan, Co. Meath C15 X967  
**Tel** +353 (0) 46 902 2363  
**E** [info@bectivestud.com](mailto:info@bectivestud.com)

### Boyne View House Guest Accommodation

Boyne View House offers the guest a range of accommodation including individual bespoke lodges and cottages. Our lodges and cottages are set in a tranquil setting where our guests can escape to the countryside and be at one with nature. [boyneview.ie](https://www.boyneview.ie)

Drinadaly, Trim Co Meath, C15 PRR0  
**Tel** +353 (0) 46 943 1325 / 86 839 2946  
**E** [deirdre@boyneview.ie](mailto:deirdre@boyneview.ie)

### The Cottages

Winner of the Best Beach Holiday Home in Europe Award, The Cottages consist of six exclusive 300 year old thatched holiday cottages nestled in private, gated picturesque flower gardens directly on the beach. Superb luxury accommodation ideally located for your dream holiday, just 25 minutes from Dublin Airport. [cottages-ireland.com](https://www.cottages-ireland.com)

Seabank, Coast Rd, Bettystown, Co. Meath  
**Tel** +353 (0) 41 982 8104  
**E** [info@cottages-ireland.com](mailto:info@cottages-ireland.com)

### Decoy Country Cottages

Winner of the Best Tourism Business in Meath 2018, and Ireland's Best Holiday Home 2019, this beautifully restored stable mews provides 1,2,3 or 4 bedroom cottages in an exclusive, gated complex with landscaped gardens. Perfect for families and groups. Close to Tara & Newgrange. Indoor/outdoor play area, games room, relaxation room, gym, day spa, car e-charging. Just 30 minutes from Dublin. [decoycountrycottages.ie](https://www.decoycountrycottages.ie)

Garlow Cross, Navan, Co. Meath  
**Tel** +353 (0) 46 902 6960  
**E** [info@decoycountrycottages.ie](mailto:info@decoycountrycottages.ie)

### Eco Lodges, Rock Farm Slane

Stay in straw-bale eco lodges or a traditional farmhouse on our organic farm. Swallow's Nest eco-lodge sleeps 2 while Lime House is the largest straw-bale residential house in Ireland with six en-suite bedrooms and luxurious living space. River House is a 5-bed holiday home in a private riverside setting. Ideal for reunions, celebrations, corporate and special interest groups. Catering and activities are available on the farm. [rockfarmslane.ie](https://www.rockfarmslane.ie)

Slane, Co. Meath  
**Tel** +353 (0) 41 988 4861  
**E** [info@rockfarmslane.ie](mailto:info@rockfarmslane.ie)

### Hideaway at Foxhollow

Fall in love with Hideaway at Foxhollow, located half way between Kells and Athboy in Fordstown, Co. Meath. This beautifully restored cut stone farmhouse guarantees comfort, luxury and a memorable traditional 'Irish' welcome. Guests are provided with a generous welcome hamper that includes breakfast supplies with an emphasis on local artisan suppliers. [hideawayatfoxhollow.com](https://www.hideawayatfoxhollow.com)

Fordstown, Navan, Co. Meath  
**Tel** +353 (0) 46 943 4042 / 87 851 8553  
**E** [junehideawayatfoxhollow@gmail.com](mailto:junehideawayatfoxhollow@gmail.com)

### Kilcoon Self Catering Cottages and Equestrian

A courtyard of four unique self catering cottages, connected through mature planting and pathways to BBQ/picnic area and playground. All cottages are fully furnished and equipped with open plan kitchens, dining areas and tv lounges. Whether it's peace and tranquillity, a place to relax and unwind, or a busy active vacation, Kilcoon Cottages is the ideal location. Enquire about our equestrian facilities too. [kilcooncottages.ie](https://www.kilcooncottages.ie)

Brownstown, Kilcoon, Co. Meath  
**Tel** +353 (0) 1 629 0803 / 87 683 9670  
**E** [kilcooncottages@gmail.com](mailto:kilcooncottages@gmail.com)

### Kiltale Holiday Homes

Kiltale House, Cottage, The Loft/Stable/Dairy/The Oaks and Stone Cottage. Award winning 4 star approved self catering accommodation with all modern conveniences. Ideal for families. Milk the goats, feed the lambs, ride the donkeys and ponies. Playground and playhouse. Angling facilities on site. On bus route to Dublin city, close to Dublin airport, Sleeps 3, 4, 6, 7 or 12. [meathselfcatering.com](https://www.meathselfcatering.com)

Kiltale, Dunsany, Co. Meath  
**Tel** +353 (0) 86 122 1589  
**E** [kiltaleholidayhomes@gmail.com](mailto:kiltaleholidayhomes@gmail.com)

### Orchard Holiday Village

The Orchard Holiday Village is a new self-catering option located in the historic village of Slane. Originally the garden and orchard of the old Parochial House, the Orchard Holiday Village currently offers 3 three-bedroom townhouses and 1 two-bedroom townhouse, all fully-equipped for a practical and luxurious self-catering stay in the Boyne Valley. [orchardholidayvillage.ie](https://www.orchardholidayvillage.ie)

Orchard Way, Slane, Co. Meath, C15 P5FK  
**Tel** +353 (0) 41 982 0093  
**E** [info@orchardholidayvillage.ie](mailto:info@orchardholidayvillage.ie)

### Steeple View Holiday Homes

Luxury 4 Star Fáilte Ireland approved 3 bedroom apartment, overlooking the Yellow Steeple, 3 mins walk to town centre and the castle. Walking distance to all locations in Trim, the perfect location to explore Dublin and the Boyne Valley.

Steeple View, High Street, Trim, Co. Meath  
**Tel** +353 (0) 87 913 5064  
**E** [trimaccommodation@gmail.com](mailto:trimaccommodation@gmail.com)

## Hostels, Glamping & Camping

### Glamping, Rock Farm Slane

Luxury glamping at our organic farm on Slane Castle Estate beside the River Boyne. Choose from yurts, shepherds huts and bell tents in mature woodland. Features include natural swimming pool and outdoor hot tub. Self-catering organic food packs, on-farm and local activities and farm tours available. [rockfarmslane.ie/glamping](https://www.rockfarmslane.ie/glamping)

Slane, Co. Meath  
**Tel** +353 (0) 41 988 4861  
**E** [info@rockfarmslane.ie](mailto:info@rockfarmslane.ie)

### Loughcrew Megalithic Centre

Loughcrew Megalithic Centre provides a unique base to explore the history, nature and adventure of the Boyne Valley, including the nearby ancient Loughcrew Cairns. Our accommodation includes glamping, camping and campervan facilities. On site we also have Maggie Heaney's Heritage Cottage, cafe and gift shop. We also provide tours of the Loughcrew Cairns. [loughcrewmega.com](https://www.loughcrewmega.com)

Summerbank, Oldcastle, Co. Meath  
**Tel** +353 (0) 86 736 1948 / 87 211 3624  
**E** [info@loughcrewmega.com](mailto:info@loughcrewmega.com)

### Slane Farm Hostel, Cottages & Camping

Old farm stables converted into a luxury hostel with private rooms and dorms. Camping also available. [slanefarmhostel.ie](https://www.slanefarmhostel.ie)

Harlinstown, Slane, Co. Meath  
**Tel** +353 (0) 41 988 4985  
**E** [info@slanefarmhostel.ie](mailto:info@slanefarmhostel.ie)



Bective Stud Apartments and Tea Rooms

Decoy Country Cottages

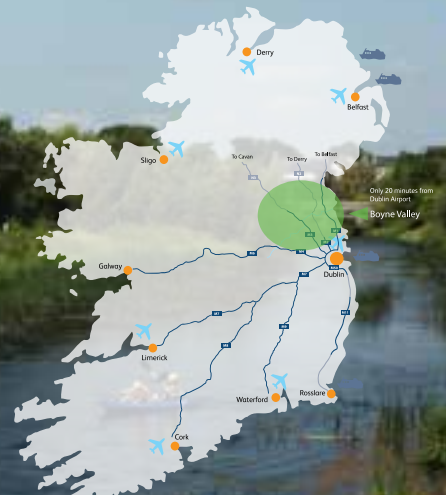
Hideaway at Foxhollow

Loughcrew Megalithic Centre



# DISCOVER BOYNE VALLEY

Birthplace of Ireland's Ancient East



Boyne Blueway, Trim



St Laurence's Gate & Drogheda Walls



Megalithic art at Knowth



Púca Halloween Festival



Newgrange, Brú na Bóinne

## Boyne Valley Tourist Information Points

### Brú na Bóinne

Brú na Bóinne Visitor Centre & Tourist Information Point  
Donore, Co. Meath, A92 EH5C  
Tel +353 (0) 41 988 0300  
E [brunaboinne@opw.ie](mailto:brunaboinne@opw.ie)  
[#BoyneValley\\_worldheritageireland.ie/bru-na-boinne](http://#BoyneValley_worldheritageireland.ie/bru-na-boinne)

### Drogheda

Drogheda Tourist Information Point  
The Tholsel, West Street, Drogheda, Co. Louth. A92 CF29  
Tel +353 (0) 41 987 2843  
E [droghedatouristoffice@gmail.com](mailto:droghedatouristoffice@gmail.com)  
[#BoyneValley\\_discoverboynevalley.ie](http://#BoyneValley_discoverboynevalley.ie)

### Kells

Kells Tourism and Cultural Hub  
Kells Courthouse, Headfort Place, Kells, Co. Meath, A82 RY62  
Tel +353 (0) 46 924 7508  
E [kellscourthouse@discoverboynevalley.ie](mailto:kellscourthouse@discoverboynevalley.ie)  
[#BoyneValley\\_discoverboynevalley.ie](http://#BoyneValley_discoverboynevalley.ie)

### Navan

Solstice Arts Centre and Tourist Information Point  
Railway Street, Navan, Co. Meath, C15 KWP1  
Tel +353 (0) 46 909 2300  
E [info@solsticeartscentre.ie](mailto:info@solsticeartscentre.ie)  
[#BoyneValley\\_solsticeartscentre.ie](http://#BoyneValley_solsticeartscentre.ie)

### Oldcastle

Oldcastle Tourist Information Point  
1 Ardfrail Court, Millbrook Road, Oldcastle, Co. Meath, A82 D589  
Tel +353 (0) 49 854 2645  
E [kraftkaffee@gmail.com](mailto:kraftkaffee@gmail.com)  
[#BoyneValley\\_discoverboynevalley.ie](http://#BoyneValley_discoverboynevalley.ie)

### Slane

Slane Hub & Tourist Information Centre  
2 Main Street, Slane, Co Meath, C15 W312  
Tel +353 (0) 41 982 4000  
E [visitslane@gmail.com](mailto:visitslane@gmail.com)  
[#BoyneValley\\_visitslane.ie](http://#BoyneValley_visitslane.ie)

### Trim

Trim Visitor Centre & Tourist Information Centre  
Castle Street, Trim, Co. Meath, C15 TXA5  
Tel +353 (0) 46 943 7227  
E [trimvisitorcentre@discoverboynevalley.ie](mailto:trimvisitorcentre@discoverboynevalley.ie)  
[#BoyneValley\\_discoverboynevalley.ie](http://#BoyneValley_discoverboynevalley.ie)

[discoverboynevalley.ie](http://discoverboynevalley.ie)

Discover Boyne Valley Marketing Office  
Tel +353 (0) 46 909 7060  
[info@discoverboynevalley.ie](mailto:info@discoverboynevalley.ie)

[facebook.com/discoverboynevalley](https://facebook.com/discoverboynevalley)

DiscoverBoyneV

[discoverboynevalley](https://discoverboynevalley) [Discover BoyneValley](https://DiscoverBoyneValley)